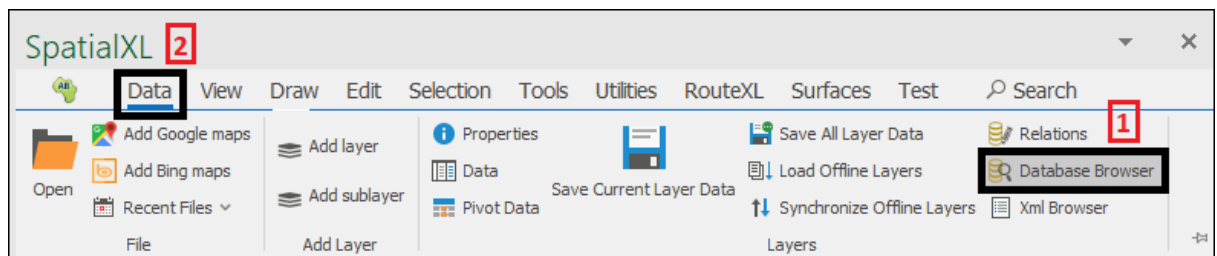




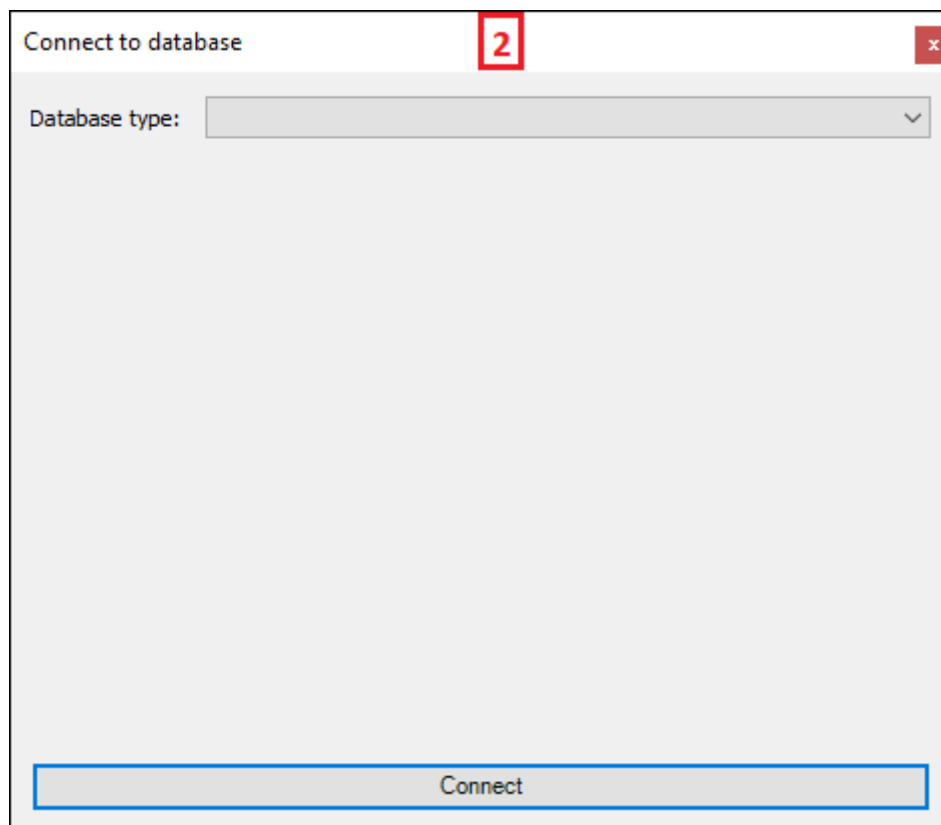
Database Browser

Database Browser(1) is a feature available in all our spatial products. It is found in the **Data** tab(2):

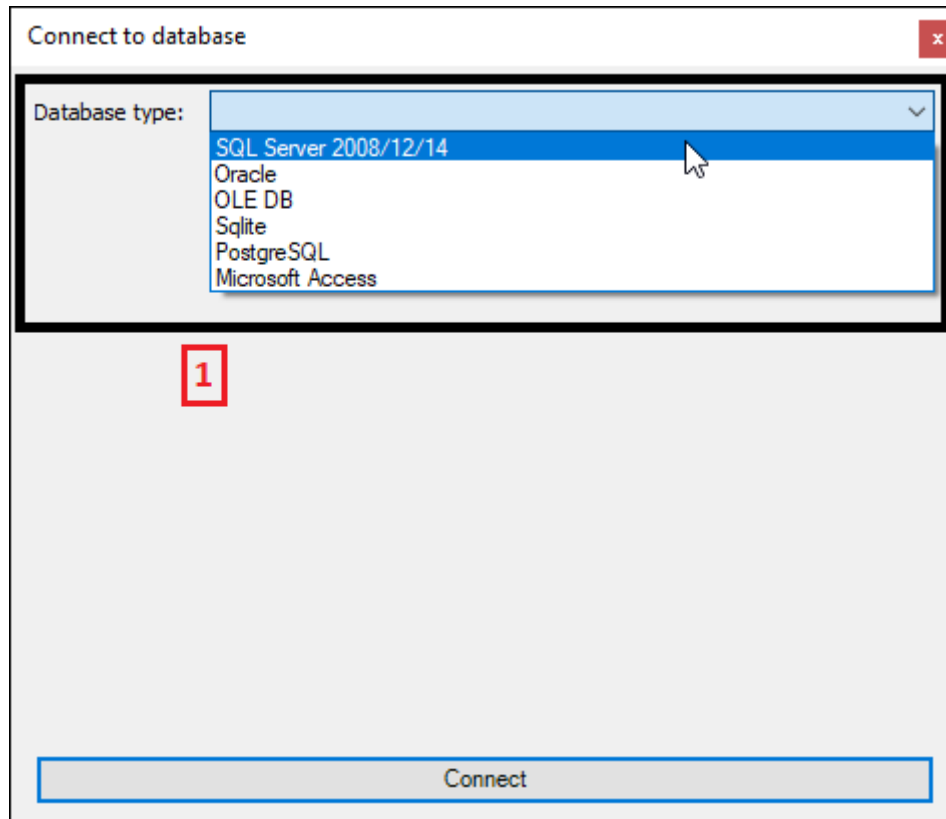


It allows you to connect to any database and present a selection of its tables as layers. Clicking on it brings up the following dialogue. Click the **Connect** button(1) to access the connection menu(2):

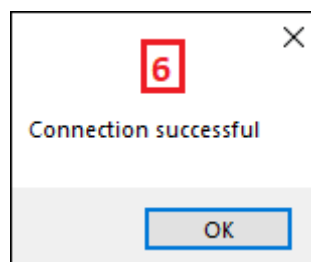
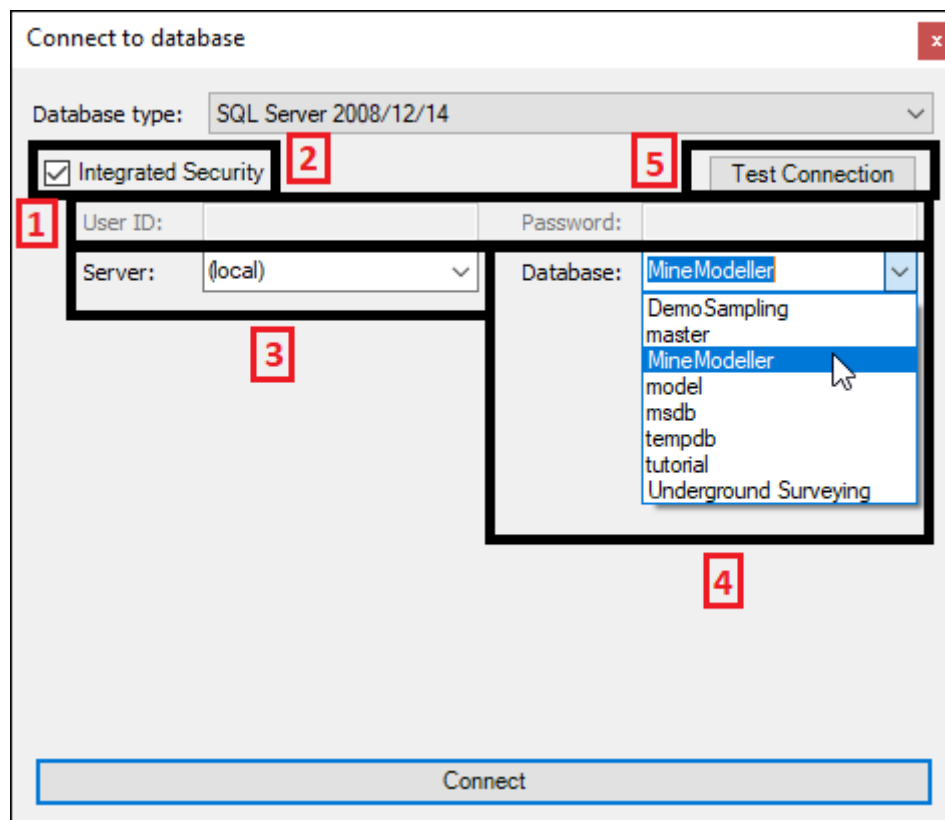




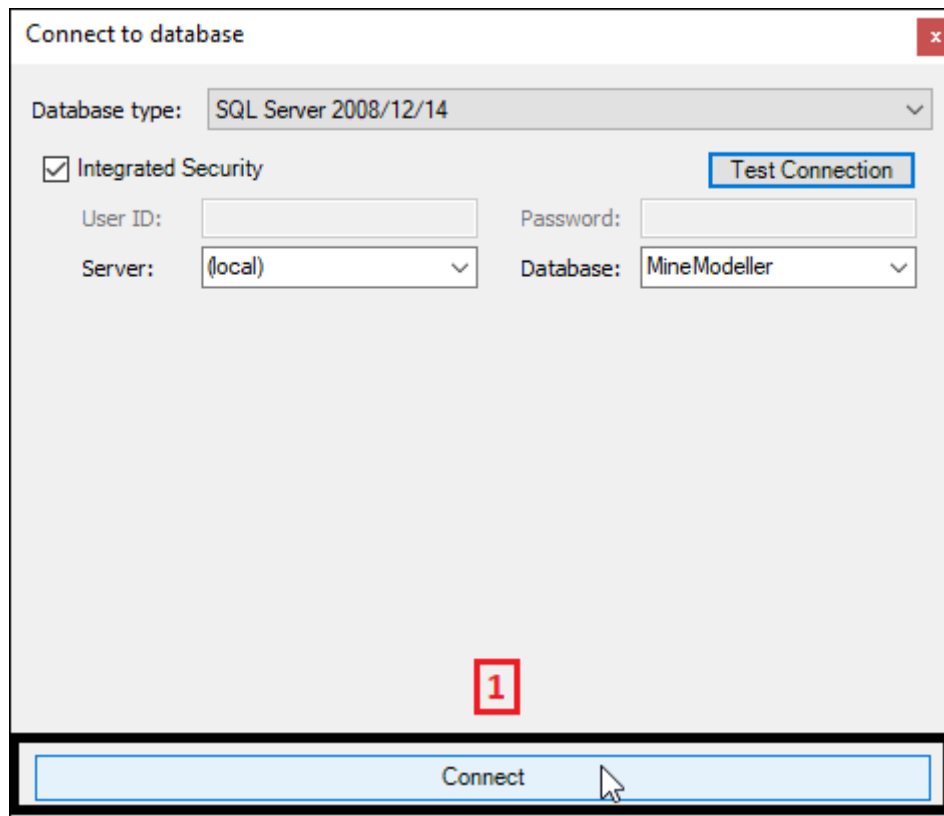
By **Database type** click on the dropdown and choose the database type you will be connecting to(1):



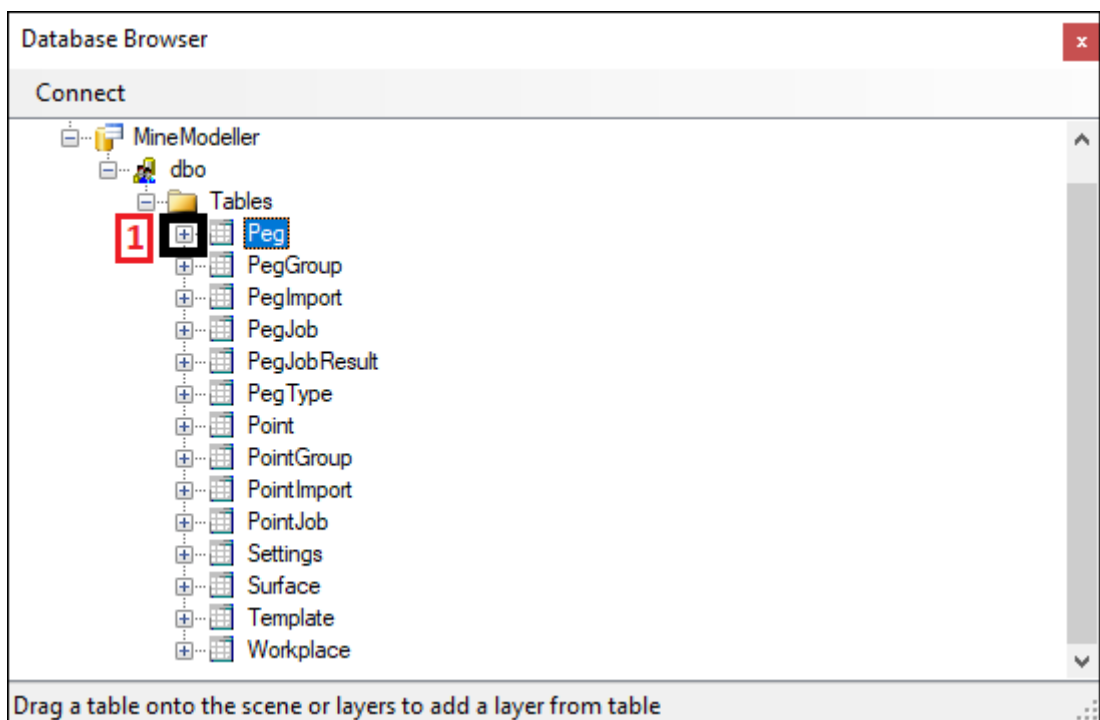
Below you are asked to put in your credentials(1). If you are using **Integrated Security**(2) you won't need to do this you can then just specify the **Server**(3) and choose the **Database**(4). You can then test the connection to the database by clicking **Test Connection**(5), if all good it will let you know(6)(Note: this is how the connection dialogue is for a SQL Server database, for other databases it may vary):

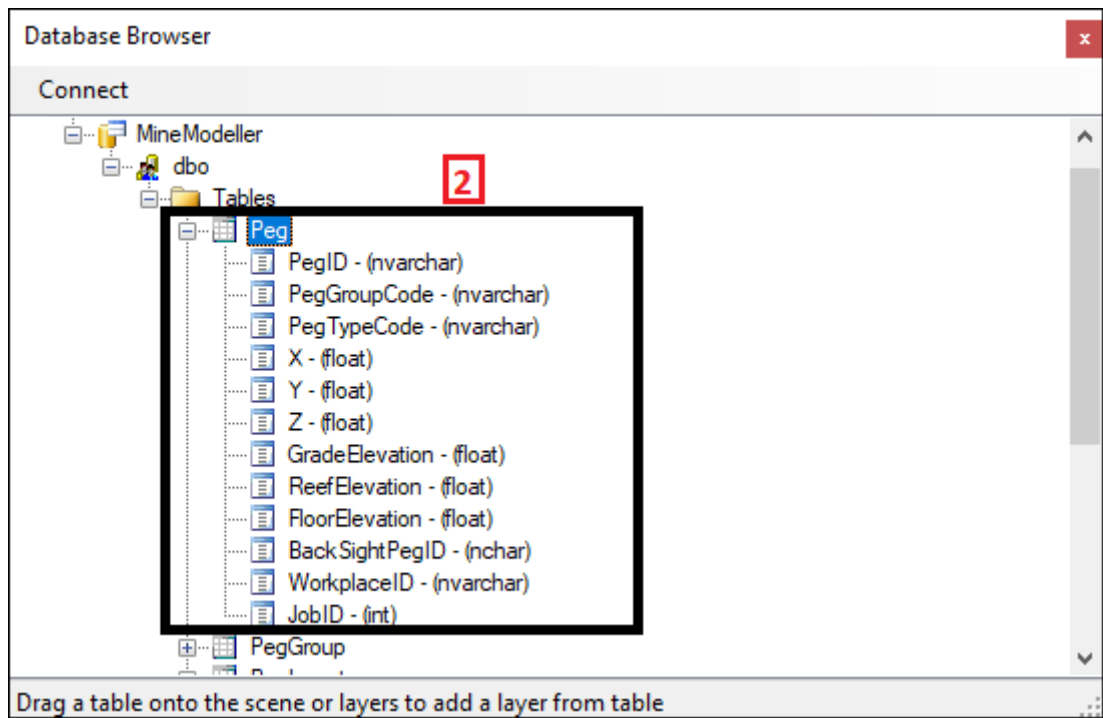


Now you can go ahead and click **Connect**(1):

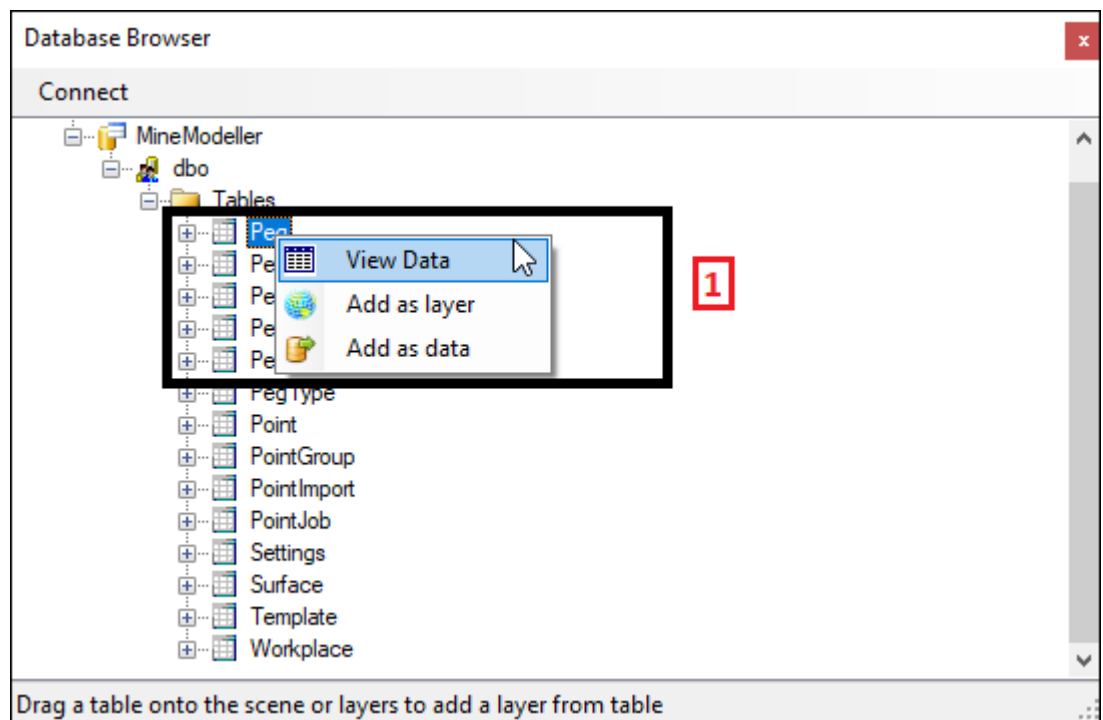


You can now view the data tables and their components. Click on the plus sign(1) to expand a table and view its components(2):





By right clicking on a data table you can choose to **View Data**(1) which will allow you to see the data of that table(2):



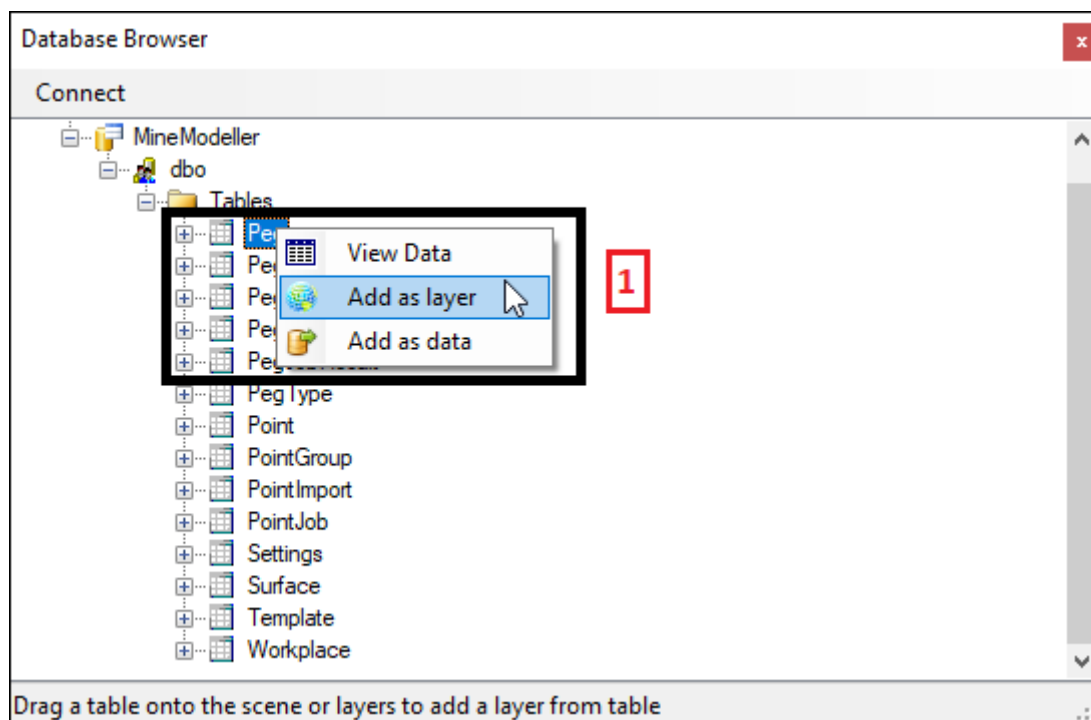
MineModeller.dbo.Peg 2

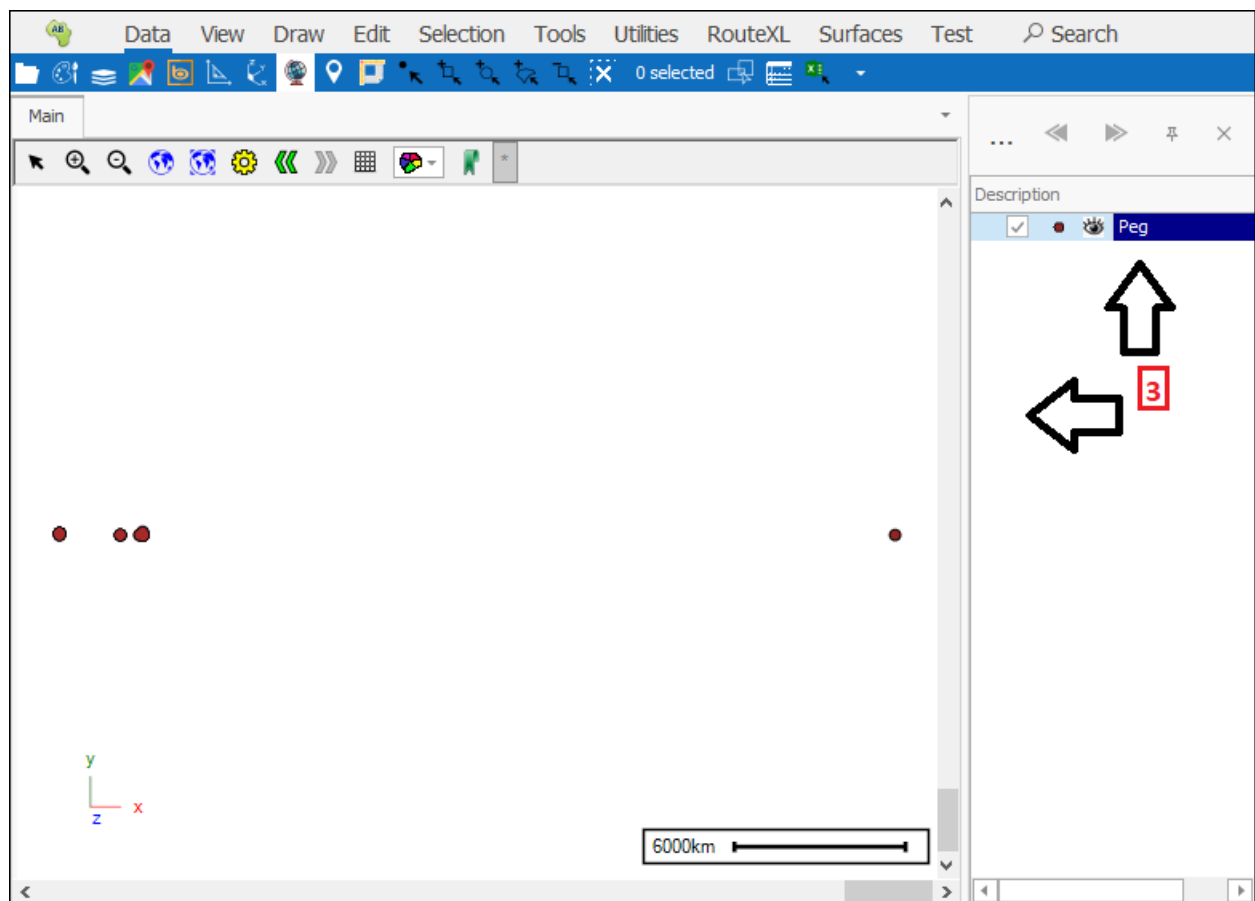
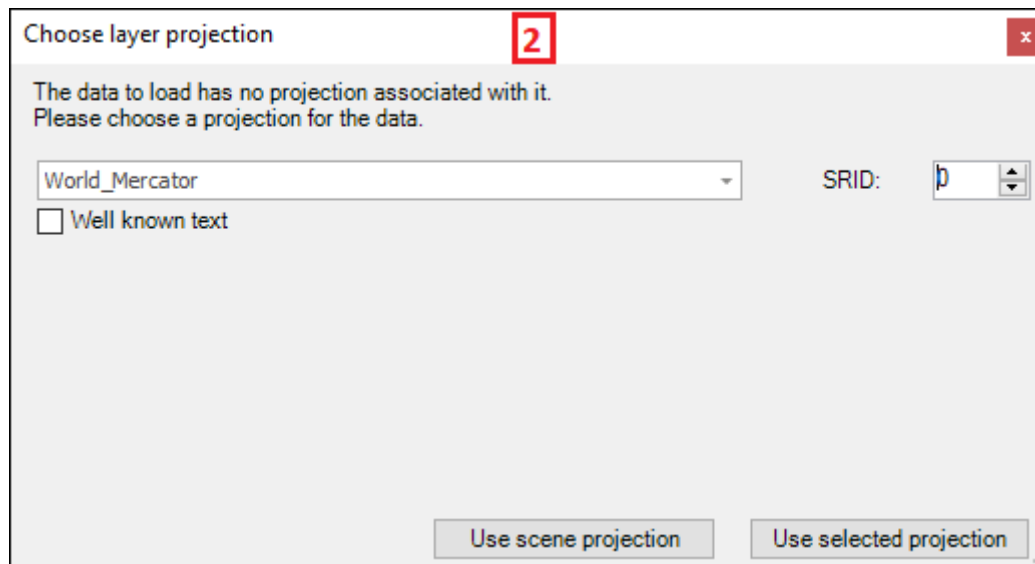
Drag a column header here to group by that column

	Peg ID	Peg Group C...	Peg Type C...	X	Y	Z
▼	ABC	ABC	ABC	=	=	=
	EDRIE2868...	main	Survey	2920711.05...	-49488.938...	-2866.0957
	EDRIE2868...	main	Survey	2921325.14...	-48559.562...	-2986.2406
	EDRIE2868...	main	Survey	2921283.78...	-48539.800...	-2962.9759
	EDRIE2869...	main	Survey	2921311.20...	-48552.386...	-2947.6938
	EDRIE2869...	main	Survey	2920640.21...	-49449.497...	-2864.3033
	EDRIE2869...	main	Survey	2920640.21...	-49449.497...	-2864.3033
	EDRIE2869...	main	Survey	2921012.92...	-48412.567...	-2800.0478

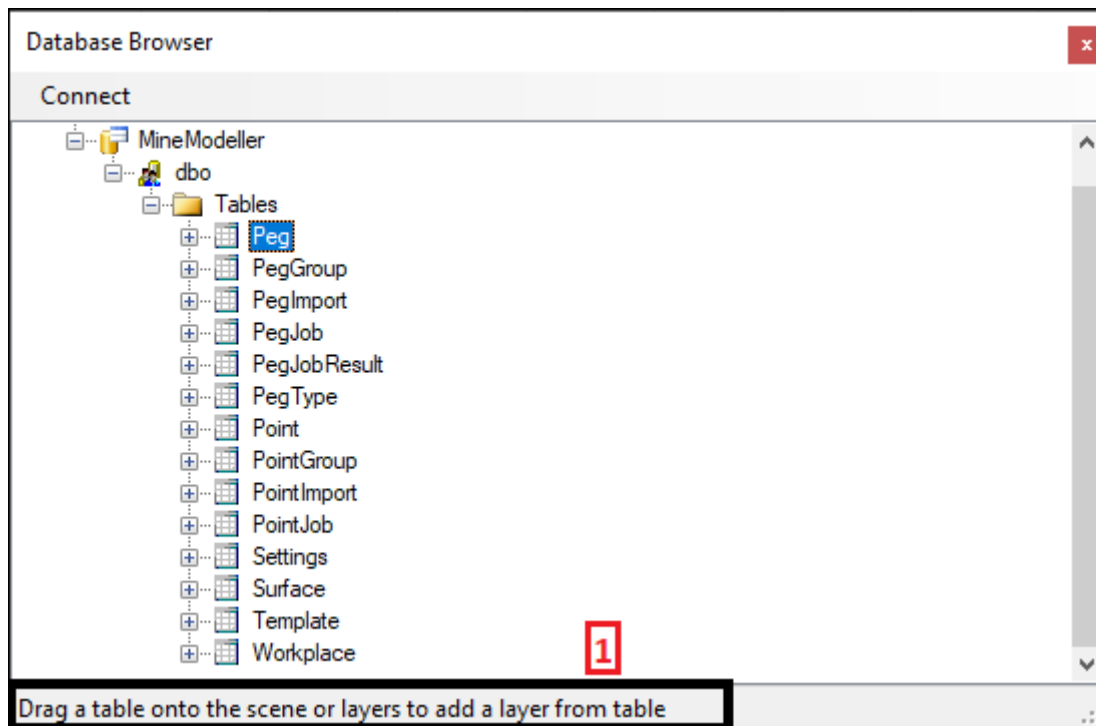
Showing all records

You can also choose to **Add as layer**(1), you will then be prompted to choose the projection(2) and your table will be added as a layer in your spatial pane(3):

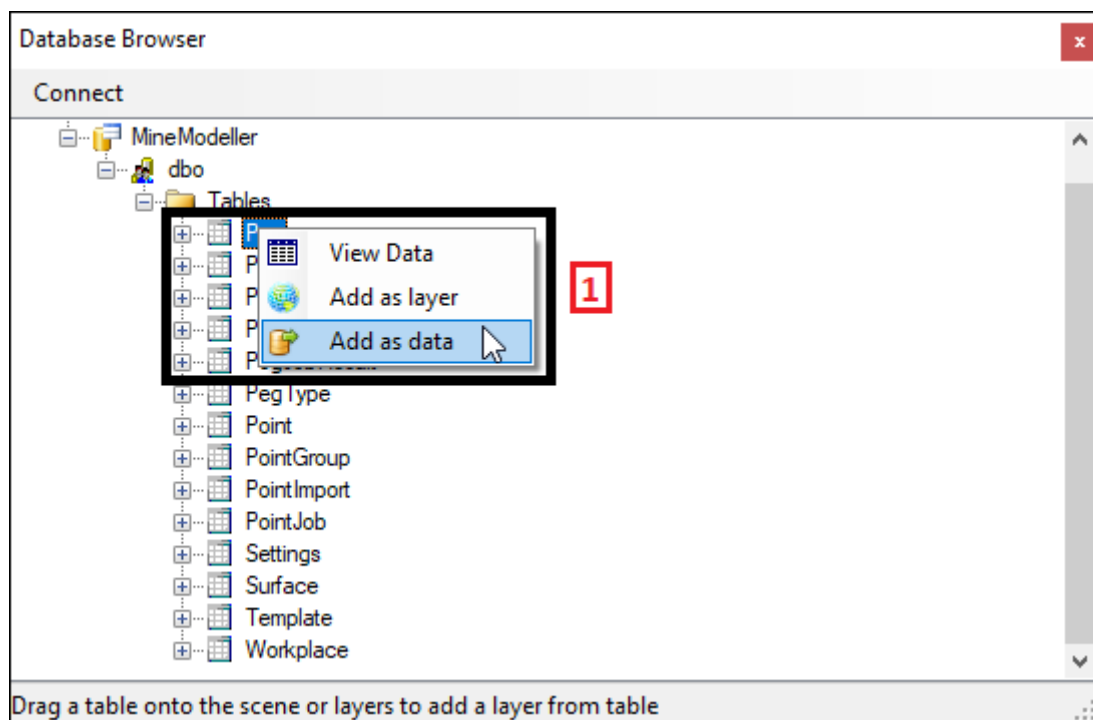


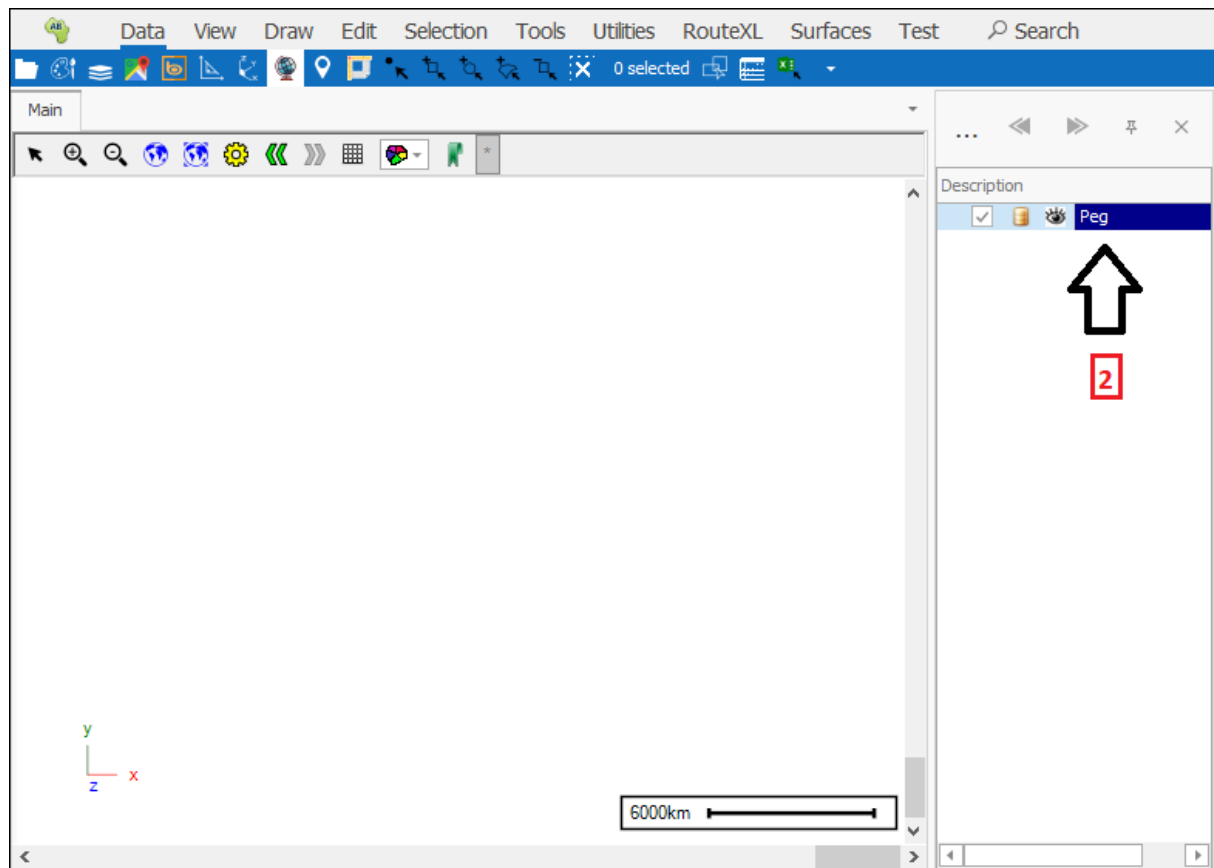


You can also just click and drag any of these tables straight onto the scene or layer control to add it as a layer, as noted at the bottom of the dialogue(1):

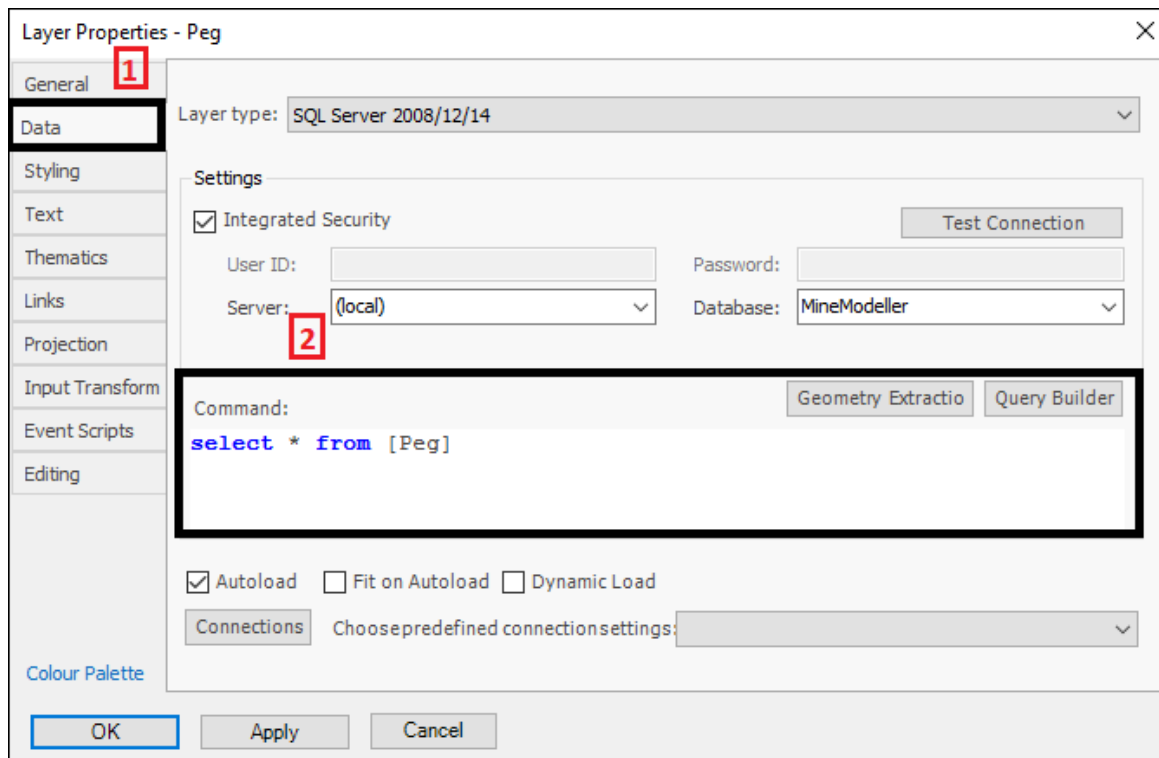


You can choose as well to **Add as data**(1) which will add just the data of the table as a non-display layer(2):

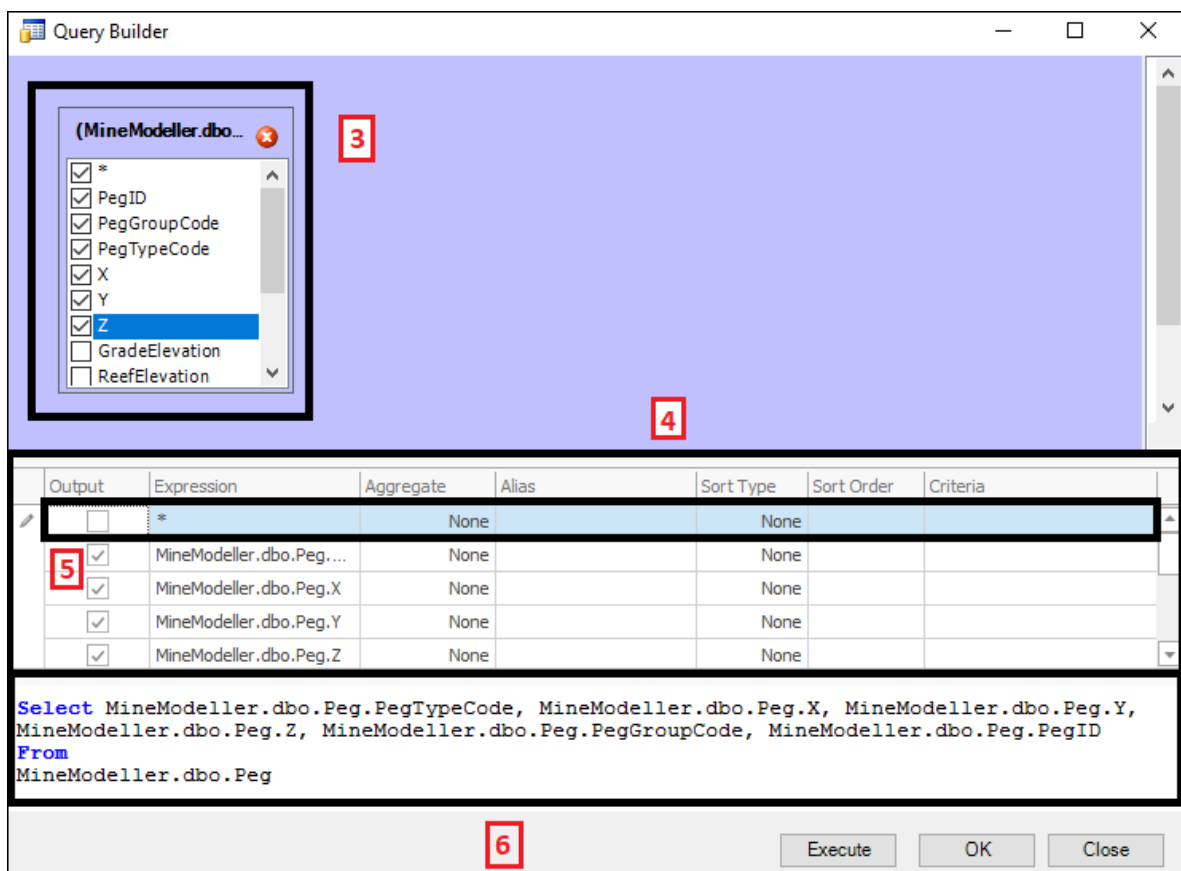
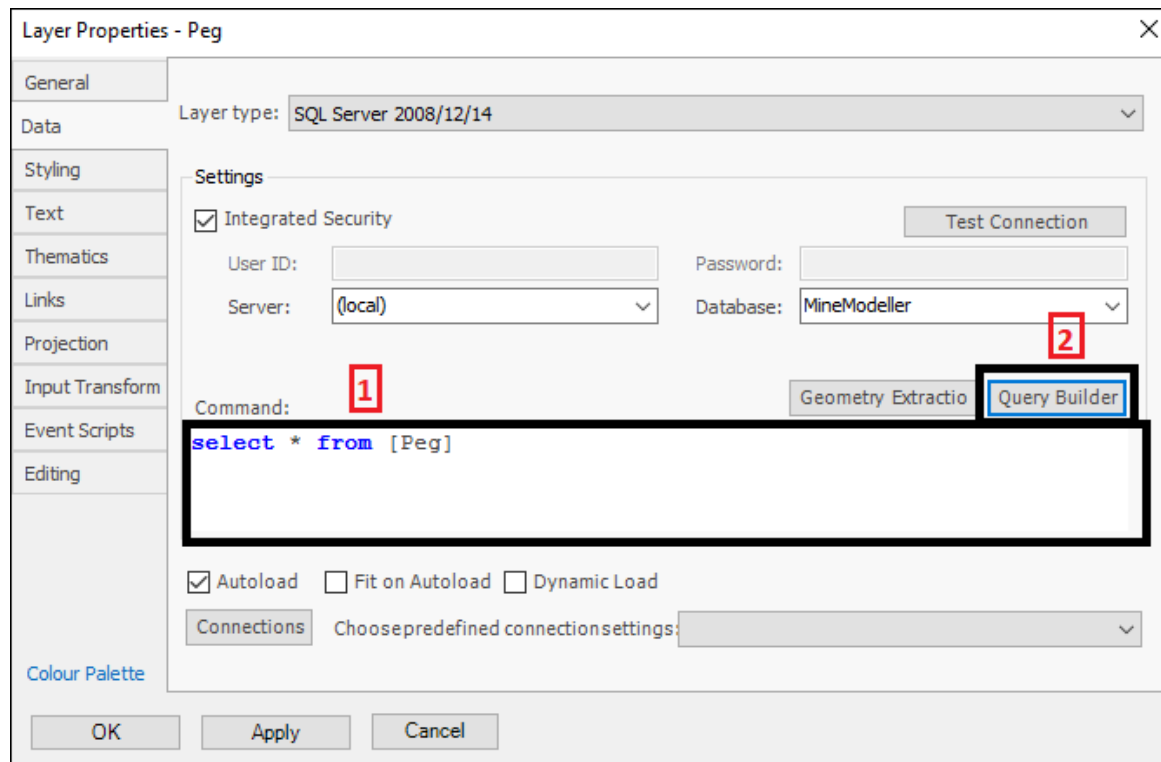




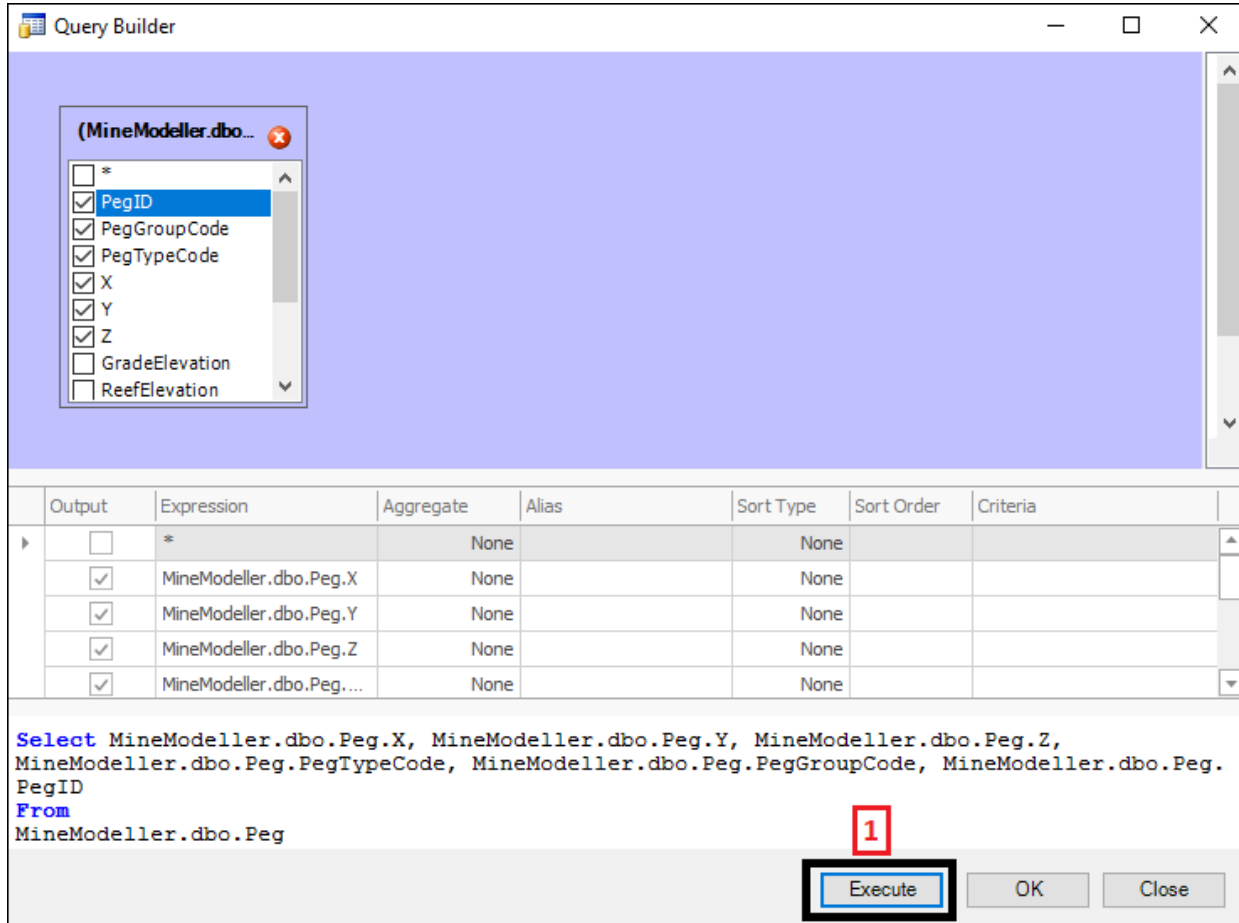
Once you have added a data table as a layer in your spatial pane you can then create whatever queries you want from the data table in the **Data** tab of the Layer Properties box of the layer(1)(2):



You can manually type the queries(1) in or you can build a query using the **Query Builder** button(2) which brings up a dialogue box where you can tick on and off which columns you would like from your table(3), these columns are then entered in the grid below(4)(make sure to have the * row(5) ticked off so as not to bring in everything) and the query is built for you(6):



When done click **Execute**(1) to execute the query and see what it brings in, which will be shown in the **Query Results box**(2). If you are happy then you can exit the results box and then click **OK**(3):

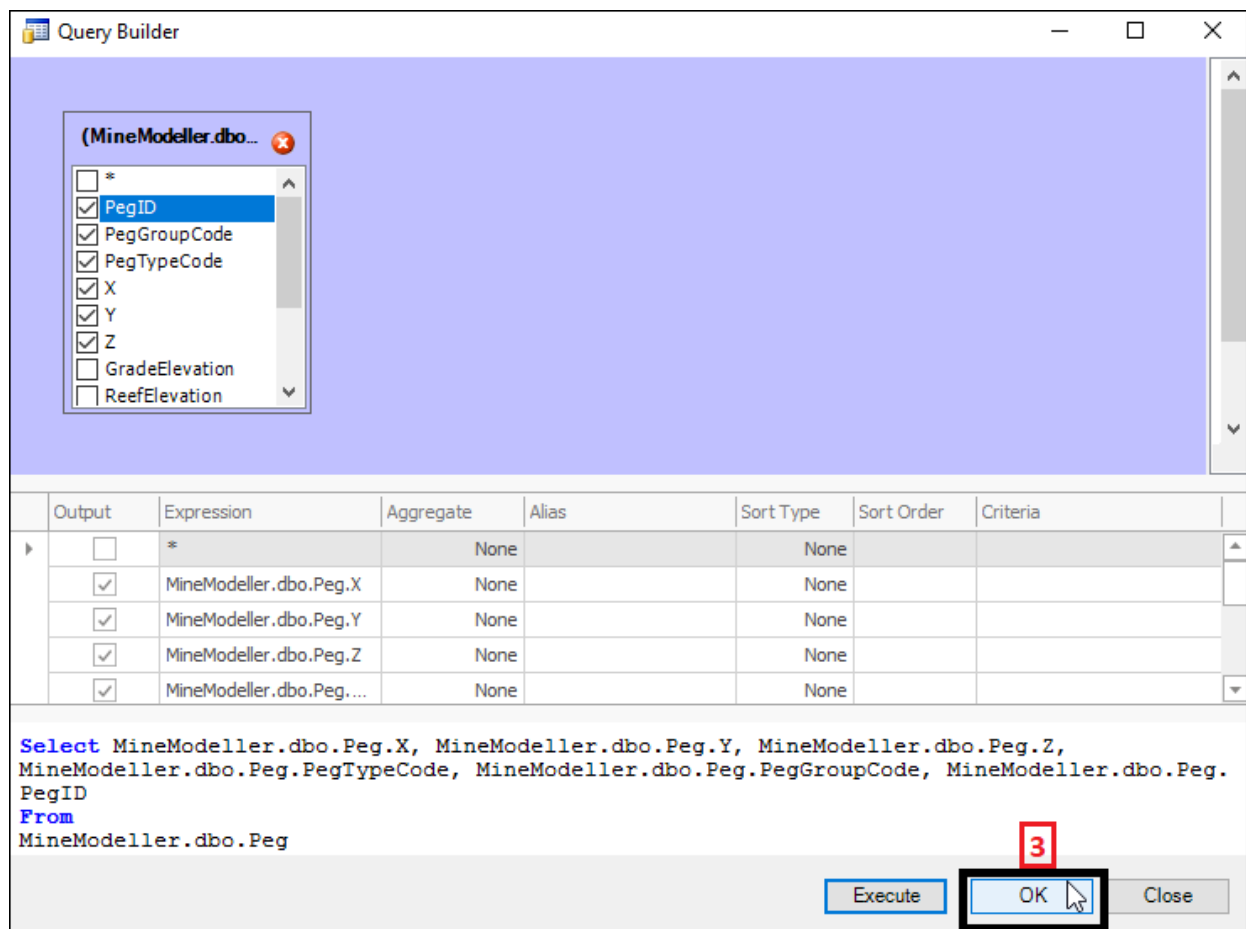


Query Results 2

Drag a column header here to group by that column

	X	Y	Z	Peg Type C...	Peg Group C...	Peg ID
	=	=	=	ABC	ABC	ABC
	2918000.76...	-51407.779...	-2440.2167...	Survey	main	EDRIE 1065...
	2917752.15...	-52008.905...	-2303.7139...	Survey	main	EDRIE 1065...
	2918648.49...	-51701.246...	-2508.1353...	Survey	main	EDRIE 1066...
	2918340.16...	-52028.462...	-2386.3396...	Survey	main	EDRIE 1066...
	2920534.81...	-52098.505...	-2908.01854	Survey	main	EDRIE 1067...
	2920585.40...	-52052.579...	-2939.1403...	Survey	main	EDRIE 1067...
	2919409.32...	-51628.479...	-2691.6278...	Survey	main	EDRIE 1067...
	2919406.47	-51638.841	-2686.6732	Survey	main	EDRIE 1067

Showing all records



Then you will see your query that has been built for you in the Layer Properties box(4) , click **OK**(5) and now you can see by viewing the layer data grid that only the columns that you queried are in your layer(6):

Layer Properties - Peg

General

Data Layer type: **SQL Server 2008/12/14**

Styling

Text

Thematics

Links

Projection

Input Transform

Event Scripts

Editing

Colour Palette

Settings

☒ Integrated Security Test Connection

User ID: Password:

Server: **(local)** Database: **MineModeller**

Command: Geometry Extractio **Query Builder**

```
Select MineModeller.dbo.Peg.X, MineModeller.dbo.Peg.Y,
MineModeller.dbo.Peg.Z, MineModeller.dbo.Peg.PegTypeCode,
MineModeller.dbo.Peg.PegGroupCode, MineModeller.dbo.Peg.PegID
From
```

☒ Autoload ☐ Fit on Autoload ☐ Dynamic Load

Connections Choose predefined connection settings:

OK **Apply** **Cancel**

Layer Data: Peg

Main

☒ Filter Graphics ☒ Inplace ☒ Zoom ☒ Highlight All ☒ Copy ☒ Print

☒ Columns ☒ Delete ☒ Zoom and Highlight ☒ Un Highlight All ☒ Copy Html ☒ Export to Excel

☒ Refresh ☒ Properties ☒ Pan ☒ Highlight Selected ☒ Un Highlight Selected ☒ Pivot

Filter Edit Selection Output

Drag a column header here to group by that column

	X	Y	Z	Peg Type Code	Peg Group Code	Peg ID
▼	=	=	=	#c	#c	#c
	2918092.497	-48619.635	-1644.855	Survey	main	EDRIE06835
	2923295.935287	-50411.386343	-2950.574	Survey	main	EDRIE0736BLP
	2918855.864839	-49269.450448	-2095.163525	Survey	main	EDRIE1
	2920173.631484	-49598.479743	-2661.588112	Survey	main	EDRIE1.030
	2917954.676	-51935.232	-2361.709	Survey	main	EDRIE10034
	2917926.168	-51930.297	-2357.792	Survey	main	EDRIE10035
	2917870.091211	-48644.314461	-1670.683134	Survey	main	EDRIE1007FLP
	2917898.598229	-51580.466274	-2468.377554	Survey	main	EDRIE10121FLP
	2917877.270344	-51559.306786	-2469.971384	Survey	main	EDRIE10124FLP
	2918830.69951	-51519.544944	-2577.275738	Survey	main	EDRIE10129BLP
	2919195.242665	-51276.334773	-2647.294258	Survey	main	EDRIE10134FLP

Support

T: +27871354351



support@primethought.biz - primethought.biz

Kyalami Estate, Midrand, Johannesburg,
1684, South Africa

