

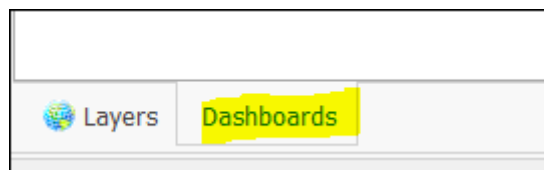


# Dashboards

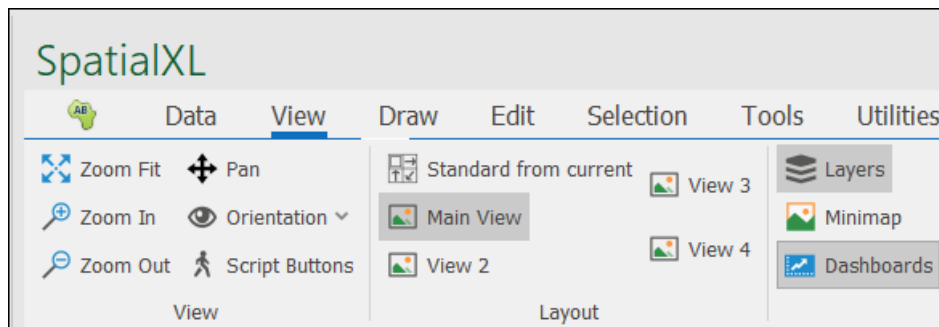
## Contents

Dashboards .....	1
Licensing .....	2
Designing Dashboards.....	2
Viewing Dashboards .....	15
Publishing Dashboards to Spatial Reader Files.....	21
Further Documentation on Dashboards.....	22

**Dashboards** is a feature in SpatialXL and all our spatial products that allows you to get various graphs and data out of your spatial data in graphics for analysis.



**Dashboards** can also be accessed from the **View** tab and selected if it is not present as a tab next to **Layers**.



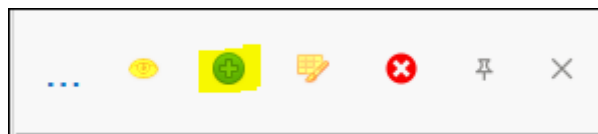
## Licensing

To create **Dashboards**, you require a **Bi** description in your license file. If you do not have this description in your license file, you will only be able to view **Dashboards** that have already been set up.

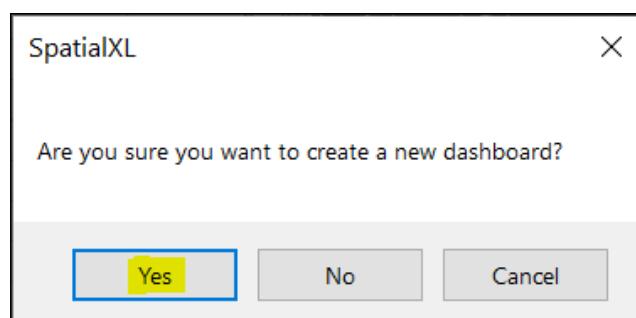
PTSS-SpatialXL-Plus,Bi,Briefcasesb,ODA,Storyboard-wayne-20201231

## Designing Dashboards

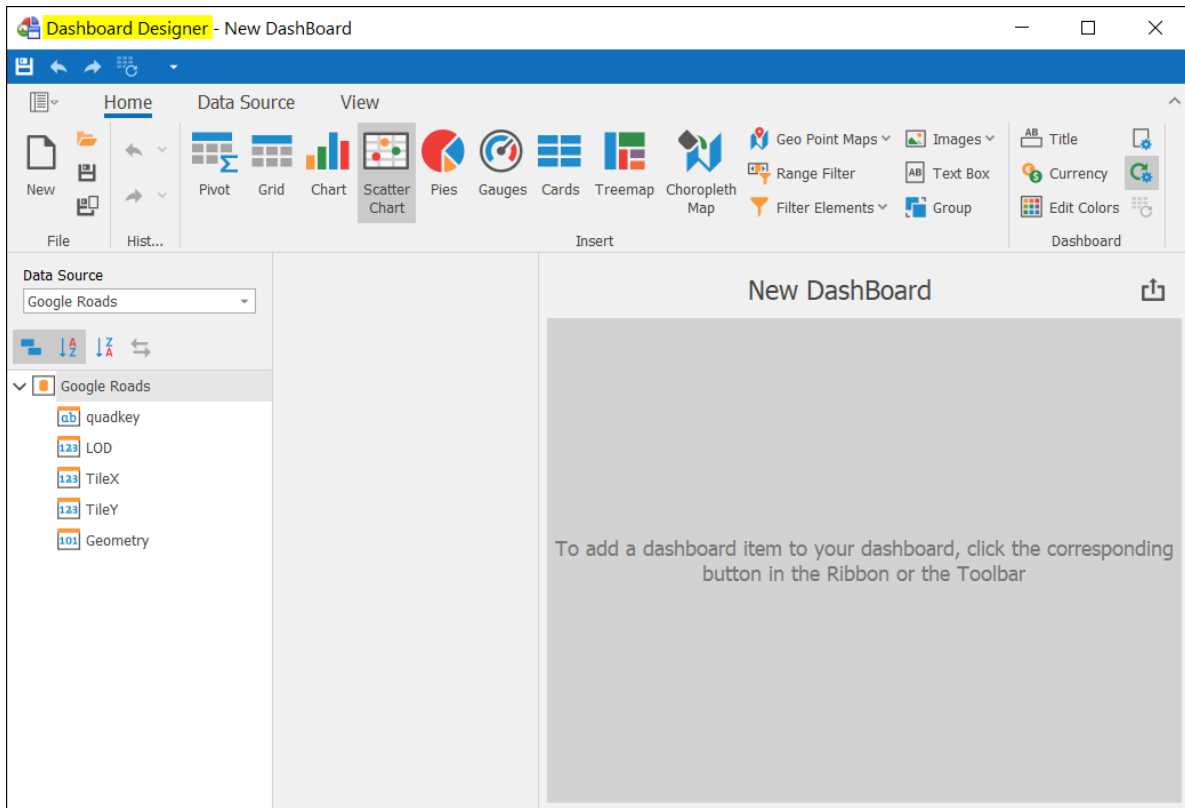
Select the **Dashboards** tab and click on **Add a Dashboard**.



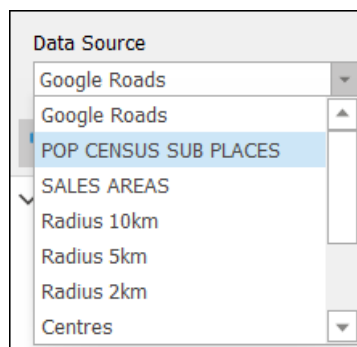
A window will come up. Click on **Yes**.



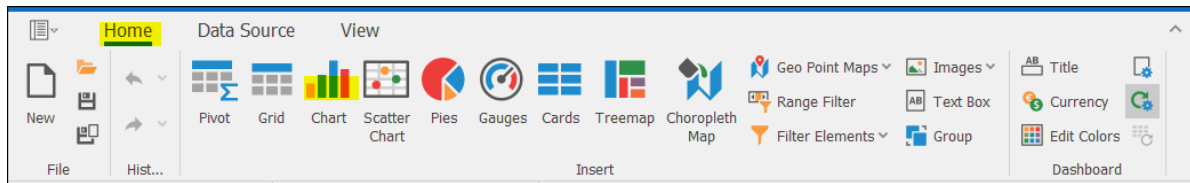
The **Dashboard Designer** will open now.



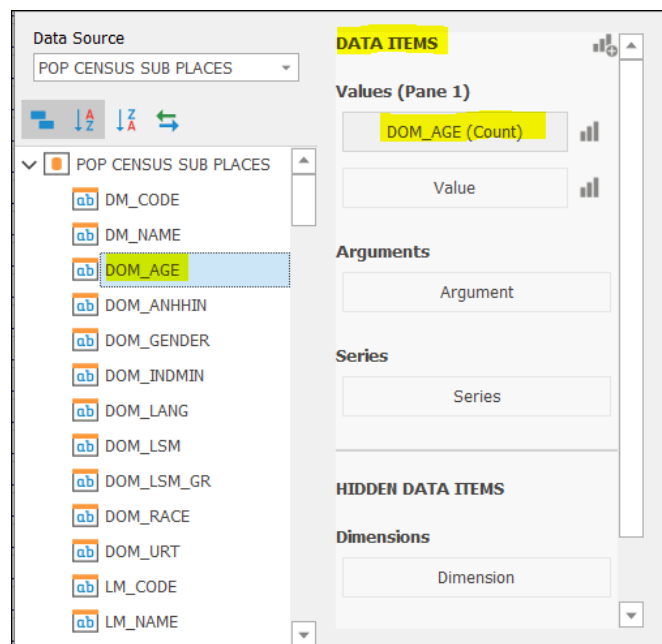
Choose the appropriate **Data Source** that you would like to create **Dashboards** for. In this example I chose the layer **POP CENSUS SUB PLACES** as my **Data Source**.



In the **Home** tab is where you can select in what form you want your information to be displayed. **Chart** is chosen in this example.



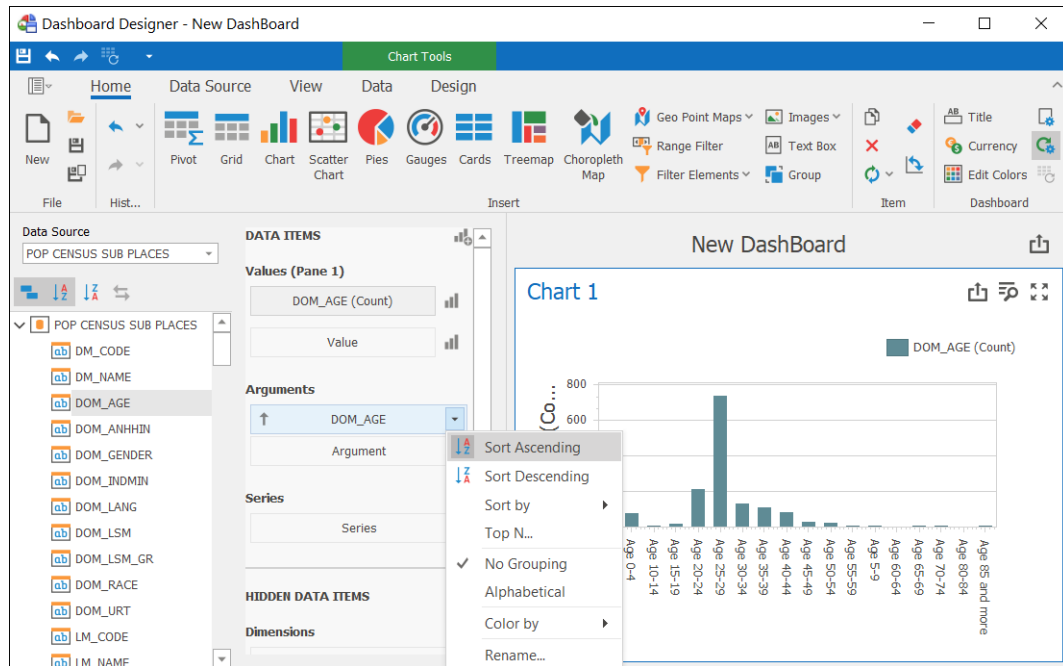
All the columns that are in the **POP CENSUS SUB PLACES** layer are displayed. Choose a column you would like to display on the **Chart** you selected. I chose **DOM\_AGE**. Click and drag this column onto the **Value** block under **Values** in the **DATA ITEMS** section.



**DOM\_AGE** value is by default (**Count**) as this column doesn't have purely numeric values to do (**Sum**) etc.

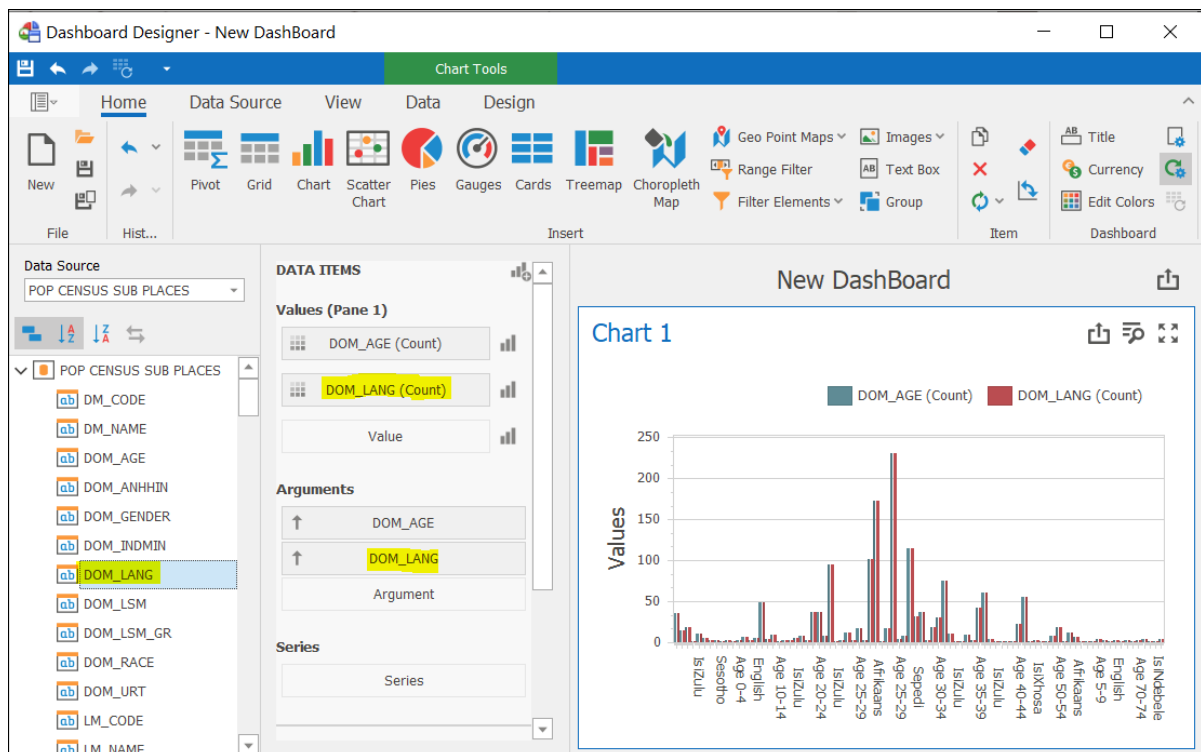
To display the different age categories, select **DOM\_AGE** again and drag it onto **Argument** block under **Arguments**.

## Dashboards User Guide

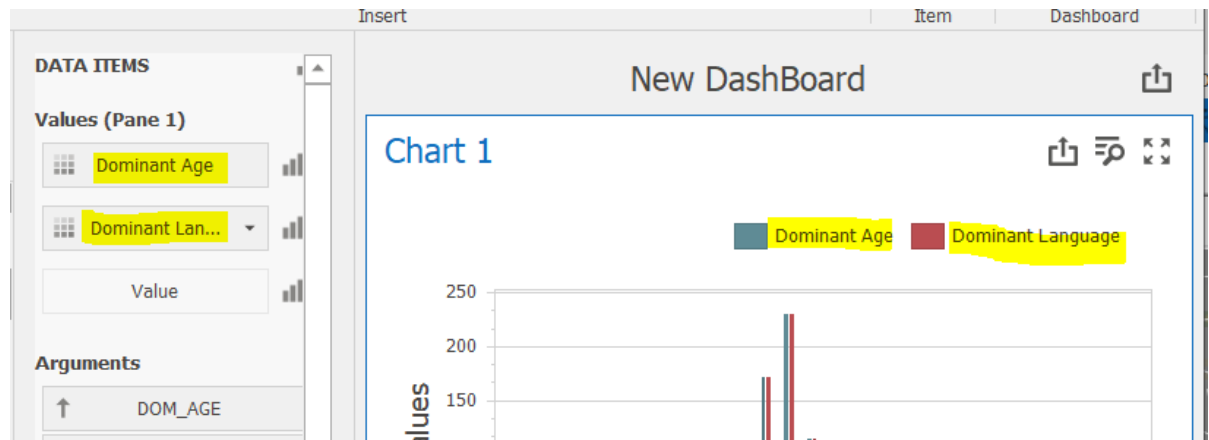
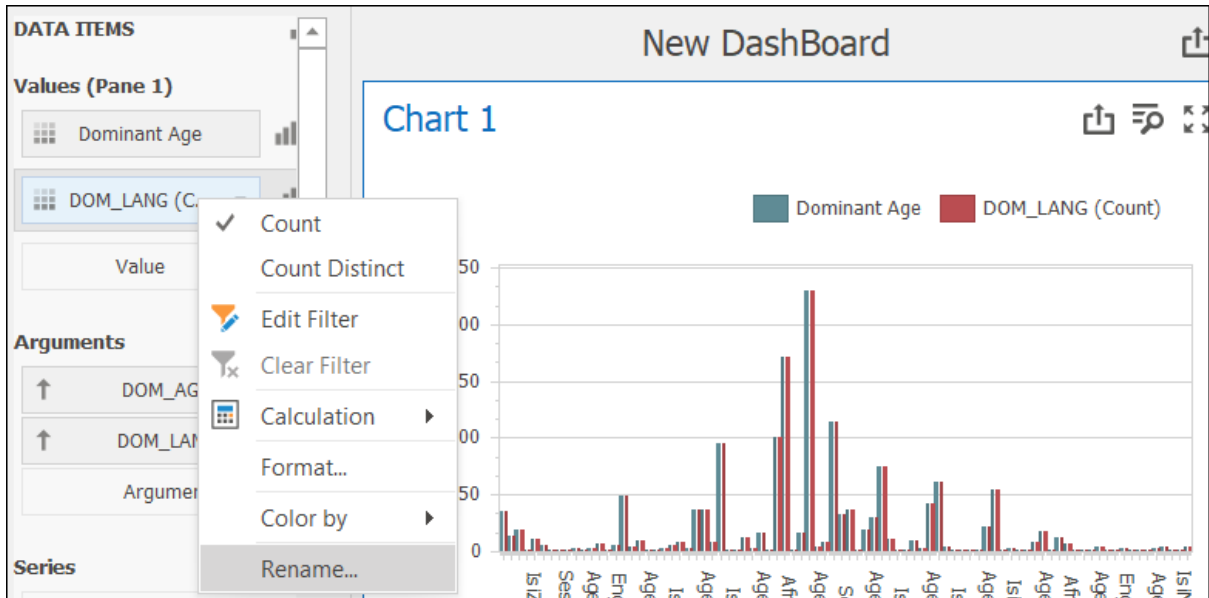


Right click **DOM\_AGE** under **Arguments** where you can choose how to arrange your data on the **Chart**. **Sort Ascending** is chosen in this example.

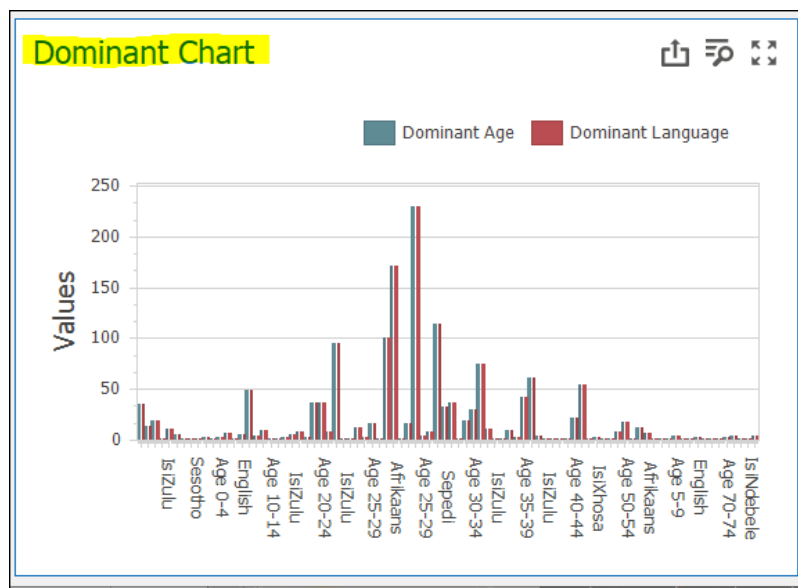
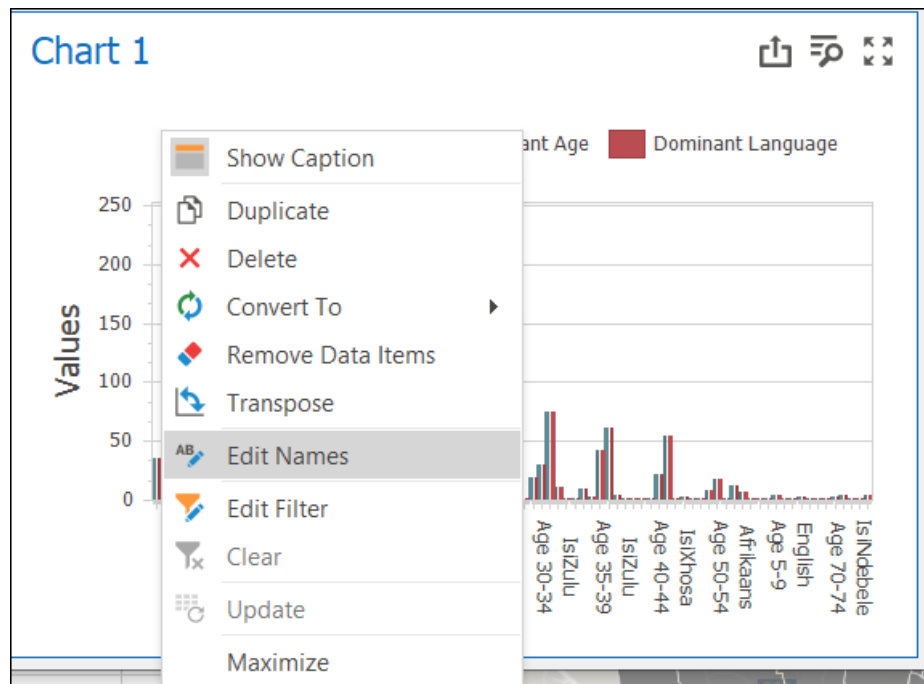
Continue choosing and dragging columns in this way that you want displayed on the **Chart**.



You can rename **DOM\_AGE(Count)** and **DOM\_LANG (Count) Values** that are displayed on the **Chart** by right clicking and selecting **Rename**.



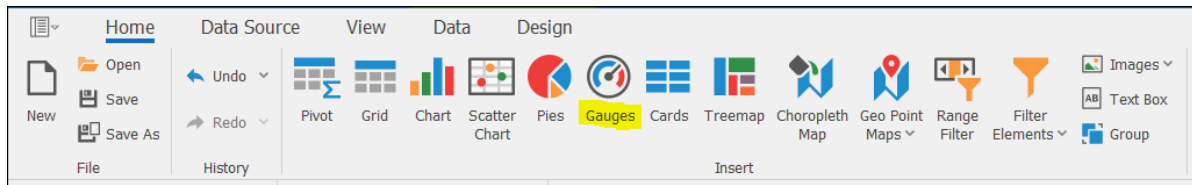
To change the name of **Chart 1**, right click anywhere in the chart area and select **Edit Names**. A window will open where you can change the name of your **Chart** etc.



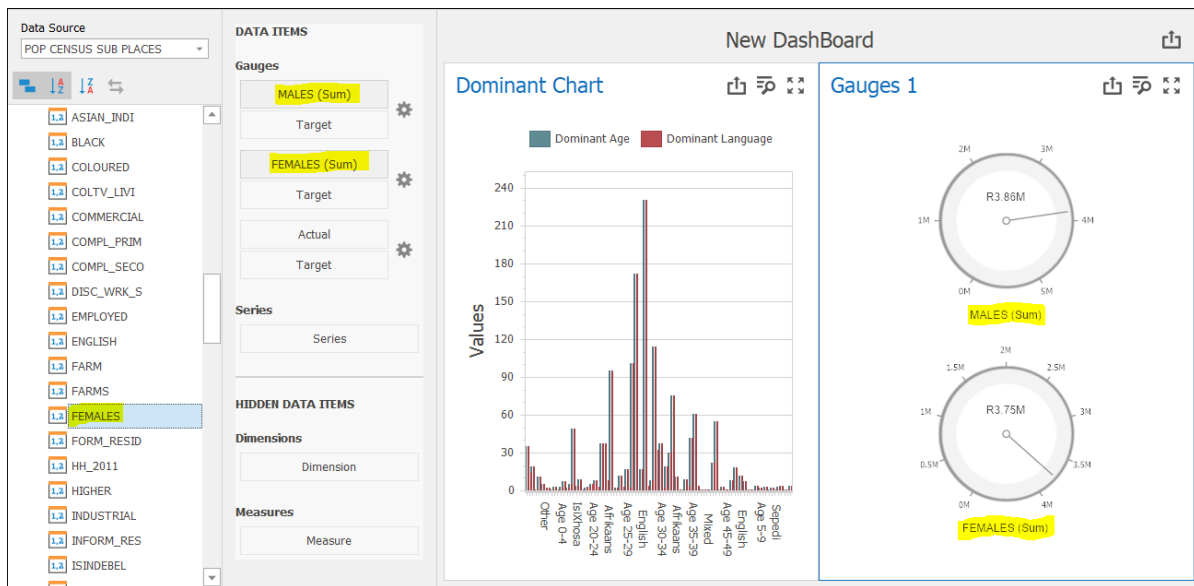
You can add various graphs, charts, etc. to be displayed on your **Dashboard** at the same time.

Next example is to select **Gauges** from the Home tab.

## Dashboards User Guide

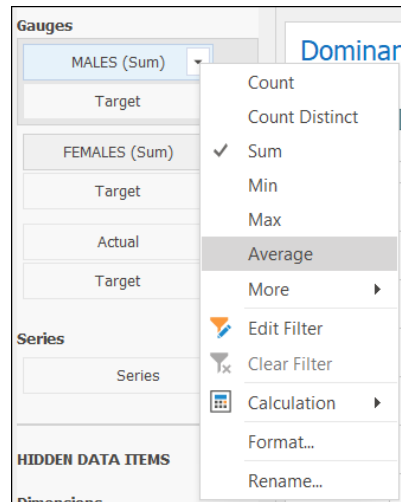


Click on **MALES** and drag it onto the **Actual** block under **Gauges** under **DATA ITEMS**. Do the same with the **FEMALES** column onto the next **Actual** block.

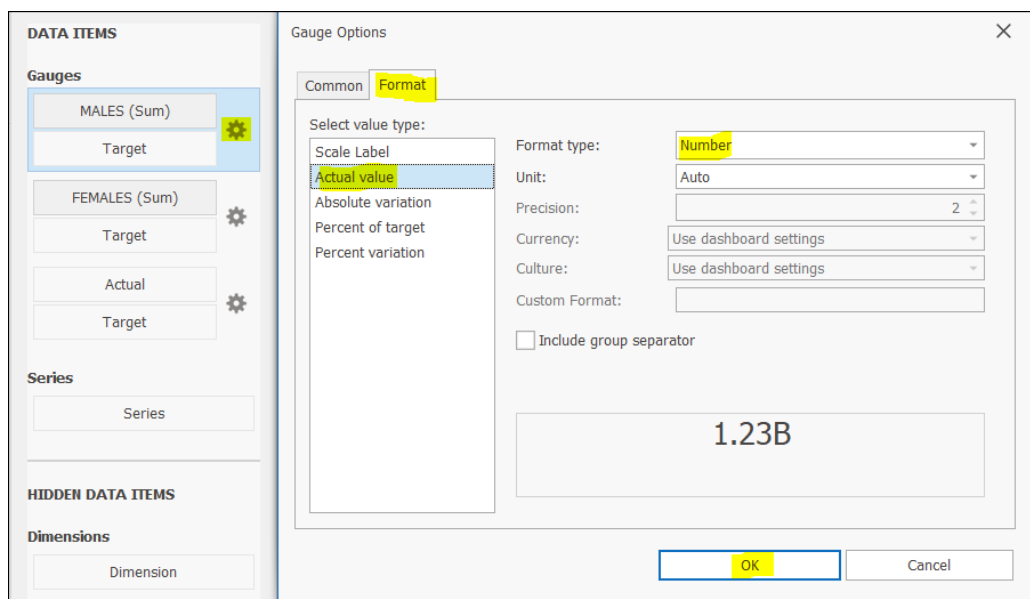


The default operation as you can see is **(Sum)** for both the columns as they only contain numeric values. You have an option of right clicking **MALES (Sum)** and **FEMALES (Sum)** and choosing a different operation from the list like **Average** etc.

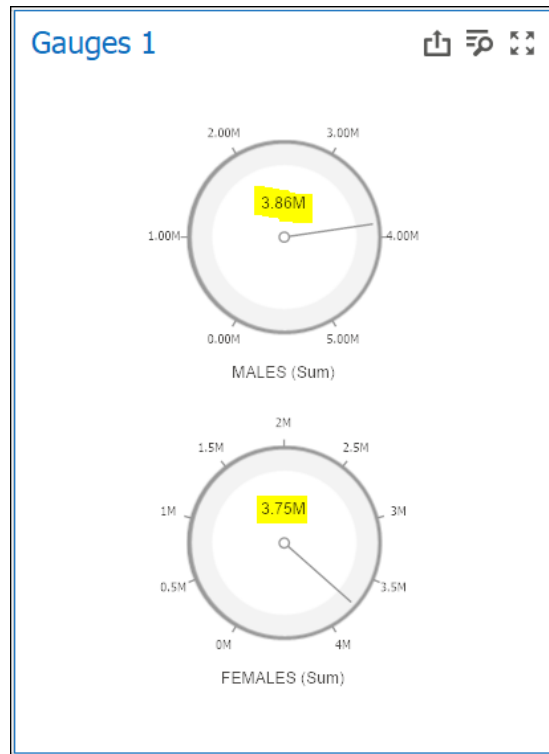




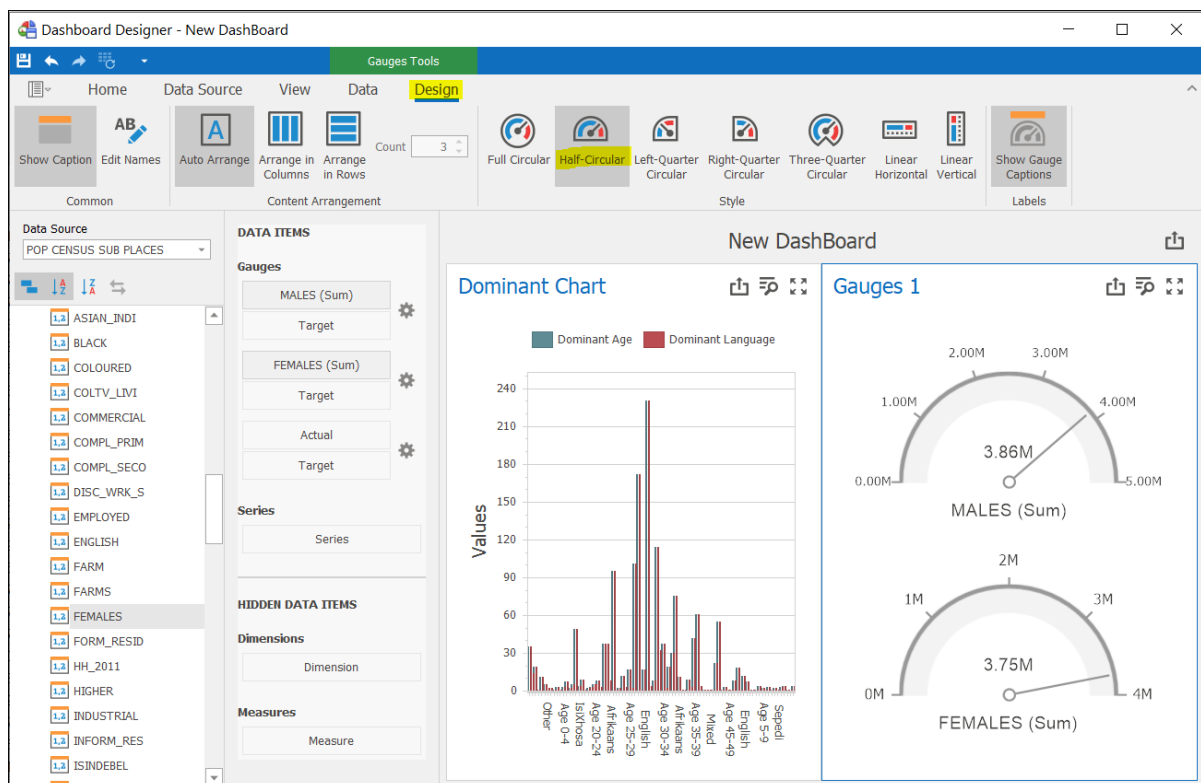
As you can see on the **Gauges** above, the format is **R** (Rand) which is not applicable for the data I want to display. To change this, click on the cog wheel next to **MALES (Sum)** and select the **Format** tab. Select **Actual value** then for **Format type**, choose **Number**. Click **OK**.



Do the same for **FEMALES (Sum)**. (Note: There are many other settings you can adjust in the **Gauge Options** window.)



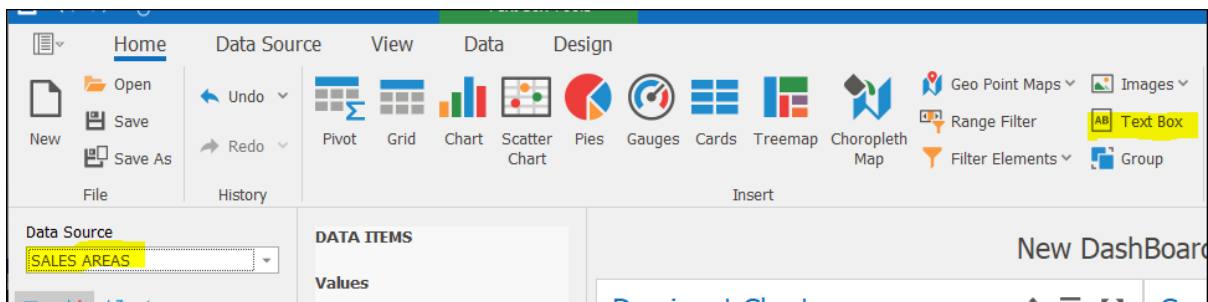
You can even choose a different **Gauge** design by going to the **Design** tab and selecting the appropriate option.



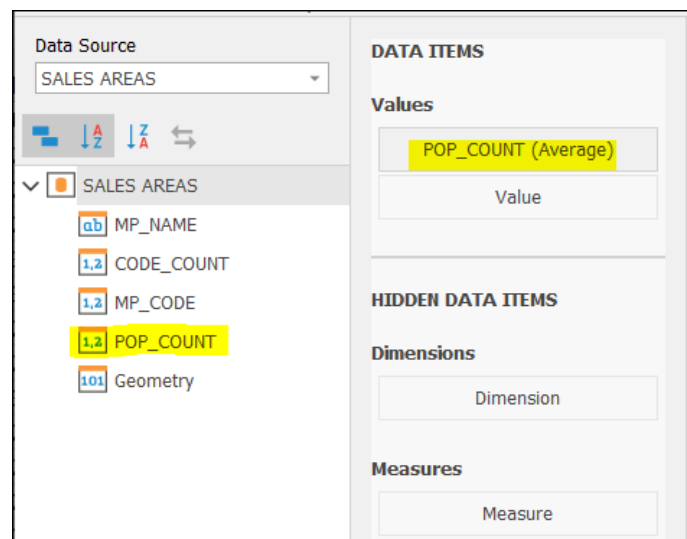
**Gauges 1, MALES (Sum), and FEMALES (Sum)** can be changed per the above instructions.

**Dominant Chart** and **Gauges 1** set up thus far have been from the same **Data Source** — **POP CENSUS SUB PLACES**. In the next example, I am choosing another **Data Source** – **SALES AREAS** which is also one of my layers.

I would like to add a **Text Box** this time for my **Dashboard**.



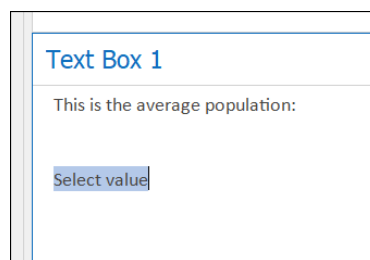
I would like the average population count, so I set this up under **DATA ITEMS** as described previously.



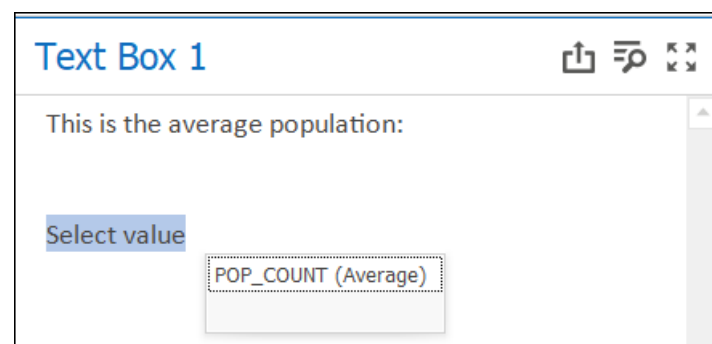
Type in any text you would like in **Text box 1** — Double click in this box to be able to do this.



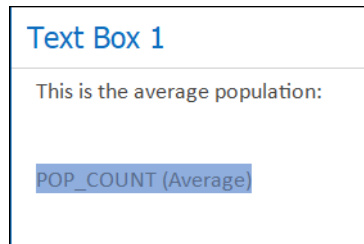
Move your cursor in this box to the point where you would like to insert values. Right click there and select **Insert Field**. **Select value** will now show.



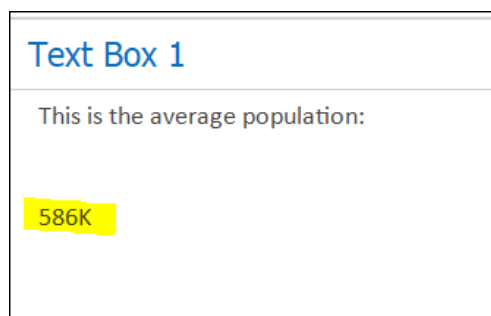
Click **Select value**. I had only set up one field **POP\_COUNT (Average)** in this example so I will click on it to choose it. If you had more than one field set up, then you could choose what you wanted to insert.



**POP\_COUNT (Average)** will be displayed.

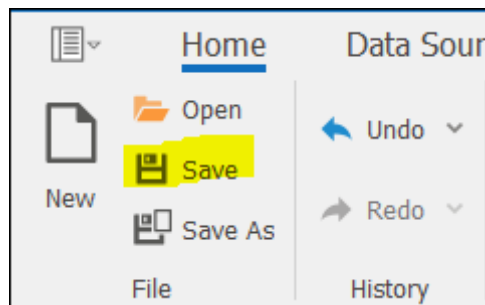


If you click out of **Text Box 1** on another area on your **Dashboard**, you will see the actual number for **POP\_COUNT (Average)**. This is the average population of the entire layer data.



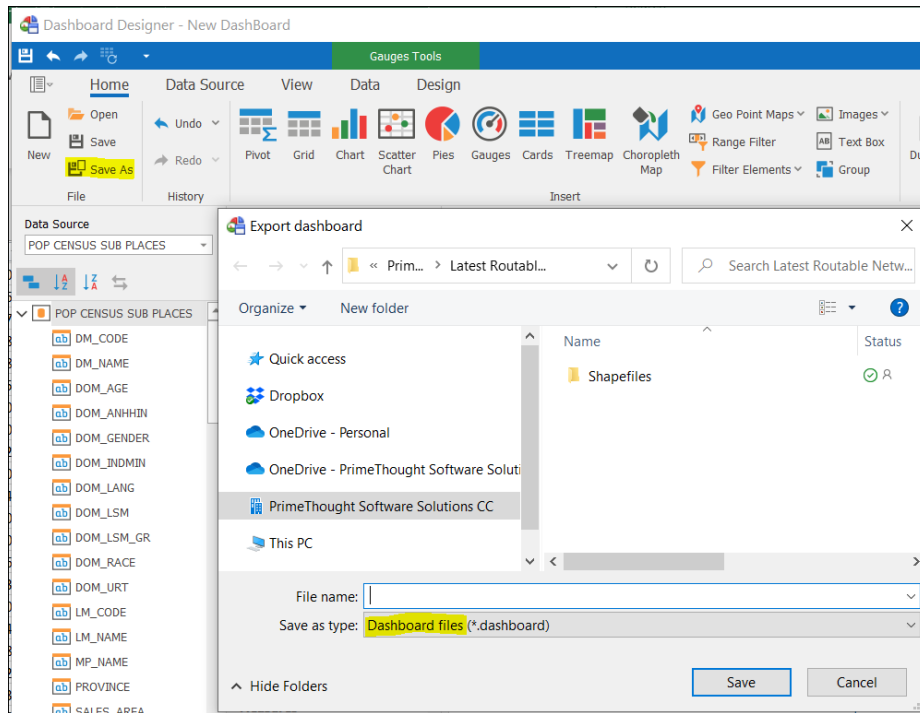
At this point you could consider your **Dashboard** complete. There are many other features in the **Dashboard Designer** that are available. Only the very basics were gone through. Understanding the above, the rest is self-explanatory.

Click on **Save** to save your current **Dashboard**.



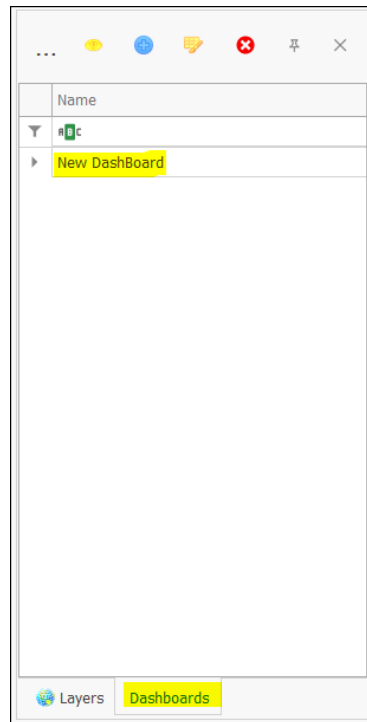
Click on **Save As** to save your **Dashboard** as a **Dashboard file**.

## Dashboards User Guide

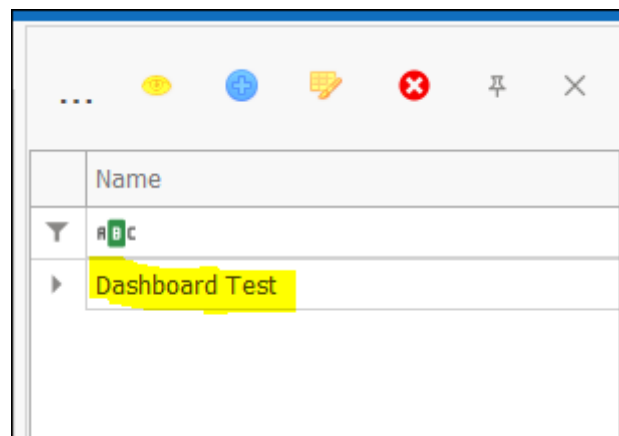


Click on **Open** to open a previously saved **Dashboard file**. (Note: If you try and open a **Dashboard file** that was created from another workbook with different layers, it won't display saved data correctly.)

When you first opened **Dashboard Designer** an item **New Dashboard** was automatically added to the **Dashboards** tab.

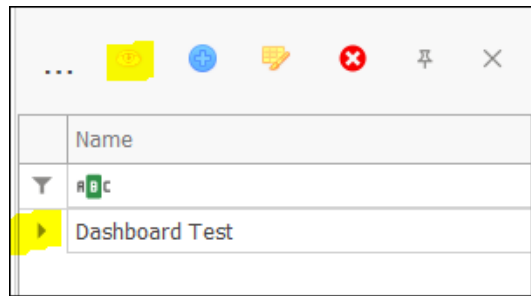


Since you are complete with designing your current **Dashboard**, you can close the **Dashboard Designer** window and click **New Dashboard** where you can change the name of your **Dashboard**.

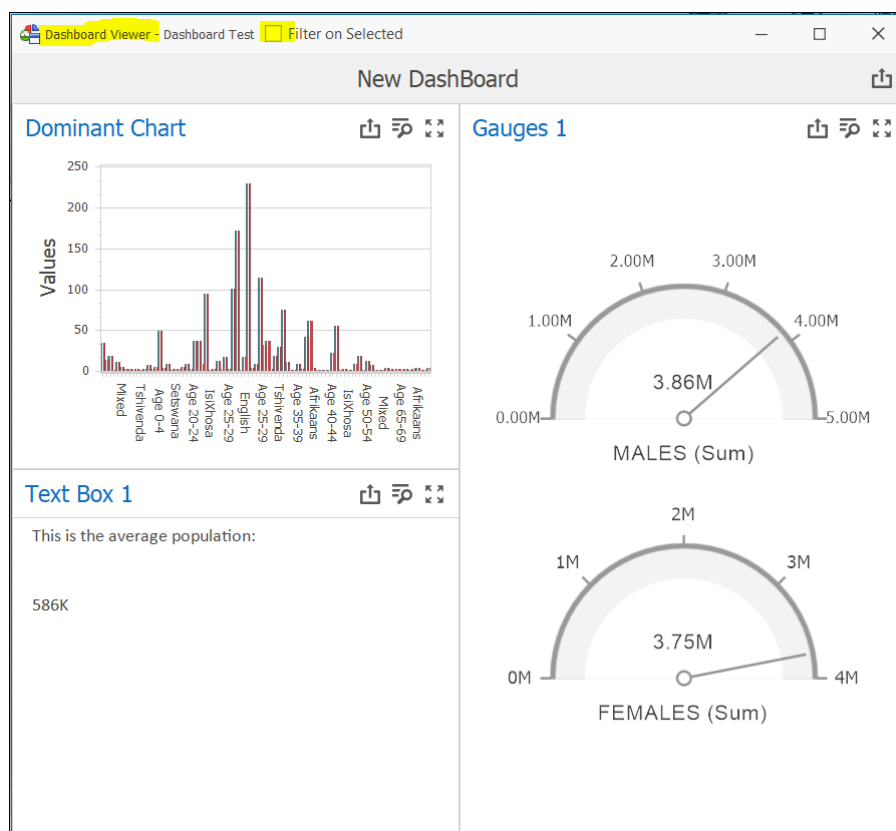


## Viewing Dashboards

Click on the **View Dashboard** icon to view the dashboard that was just set up – **Dashboard Test**. If you had another dashboard set up, you would first select that dashboard then click on **View Dashboard**.



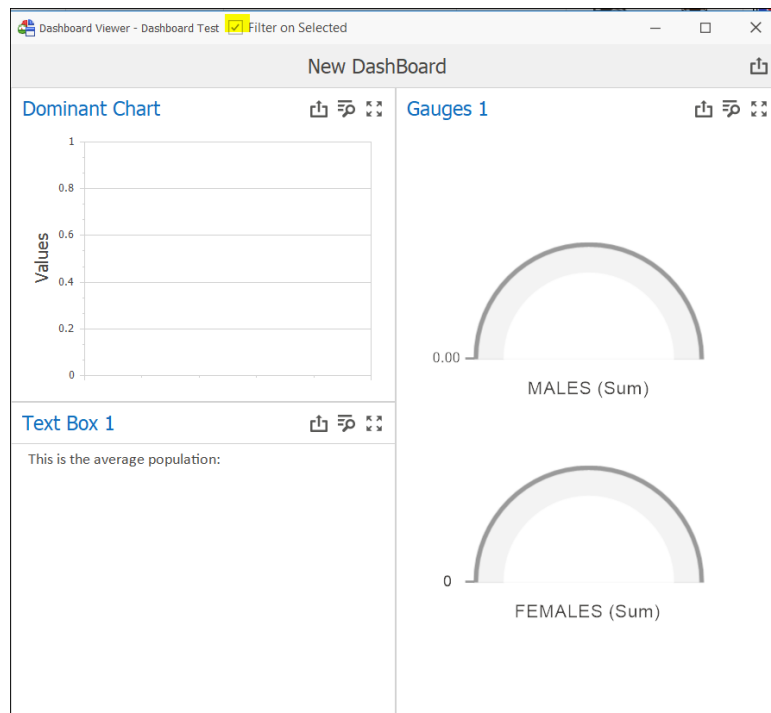
The **Dashboard Viewer** window will open. The numbers being displayed are totals of all the data. **Filter on Selected** is not checked on.



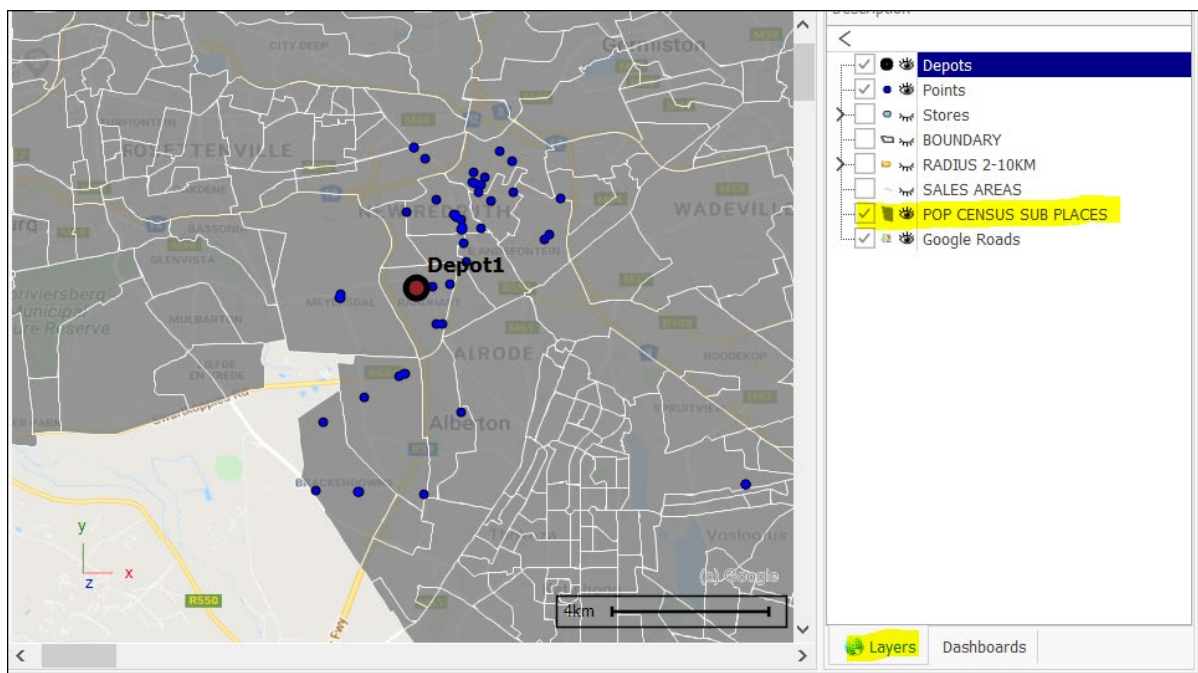
To get out numbers of selected items, check on **Filter on Selected**.



## Dashboards User Guide

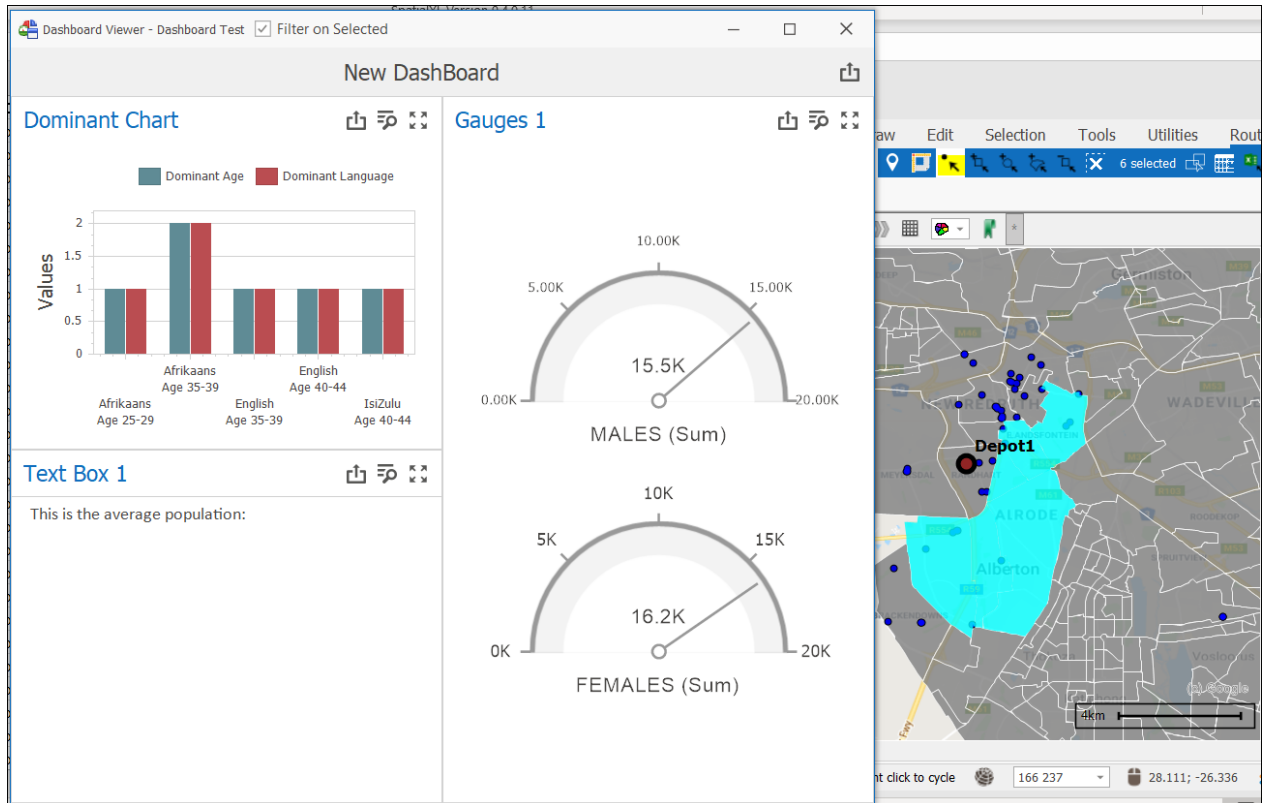


There is no information displayed here yet as no items have been selected yet on the graphics. Go to the **Layers** tab and ensure the layer that is referenced as the **Data Source** for your **Dashboard** is checked on.



## Dashboards User Guide

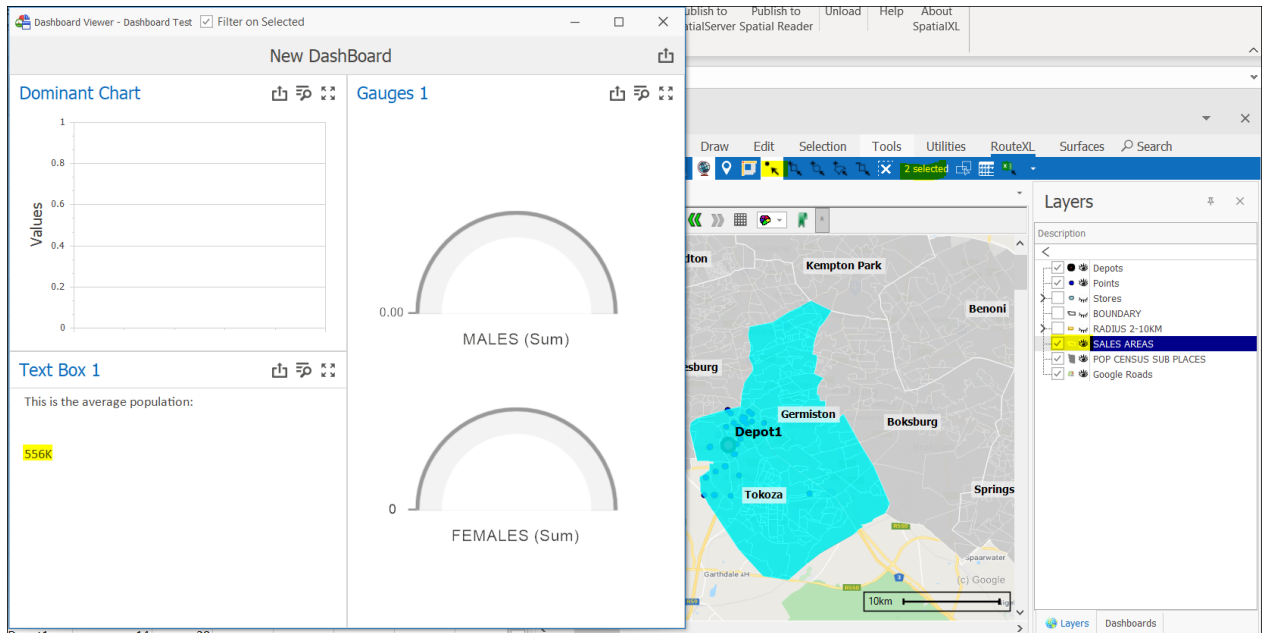
Now select an area or areas using one of the selection tools. The exact numbers for the selected areas will be displayed on the **Dashboard Viewer**.



**Note:** **Text Box 1** number will not be displayed if **Filter on Selected** is checked on as this was created from a different **Data Source** – **SALES AREAS**.

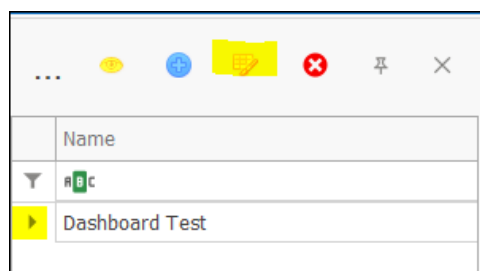
To display the value in **Text Box 1**, ensure **SALES AREAS** is checked on in the **Layers** tab. Then using one of the selection tools, select 2 or more areas from this layer. The average population number will then be displayed.

## Dashboards User Guide



No data will be populated for the other items on the **Dashboard Viewer** as the **Data Source** is the layer **POP CENSUS SUB PLACES** for them. Only areas from the **SALES AREAS** layer are selected.

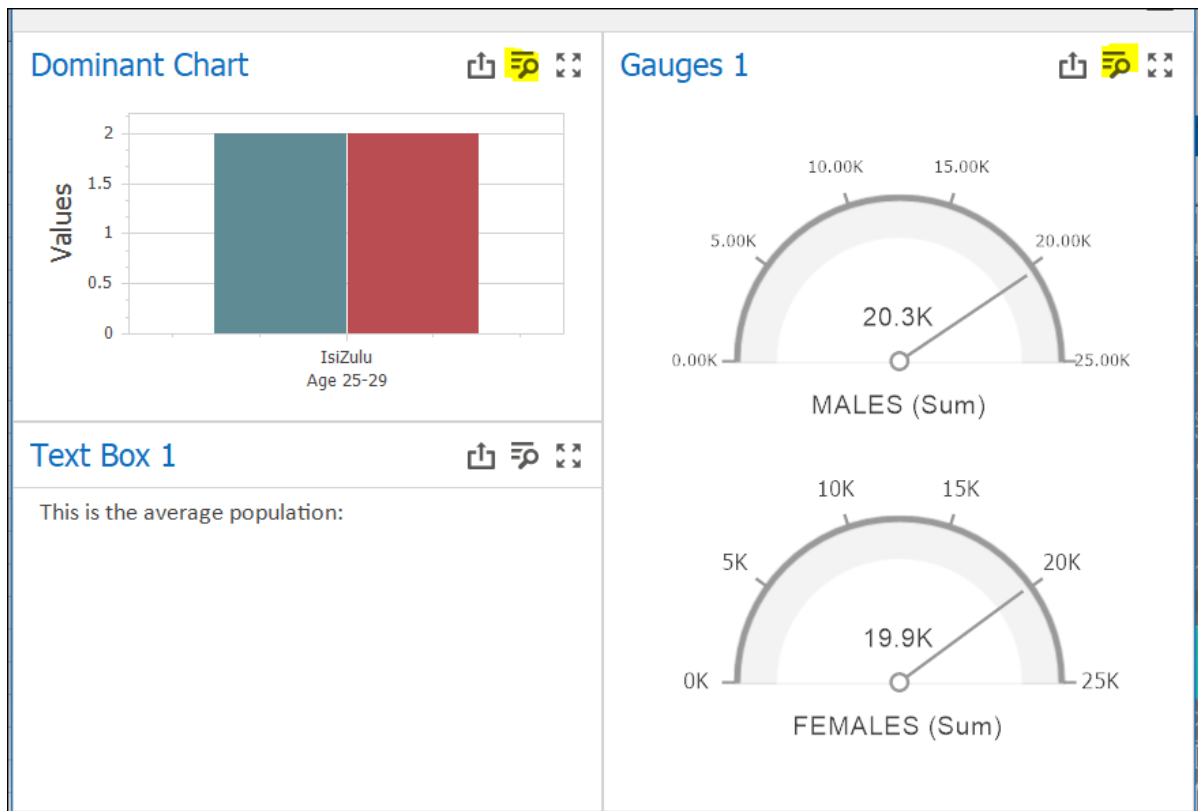
If you would like to change any design in any **Dashboard** from the **Dashboards** tab, select the appropriate **Dashboard** and click on the **Design Dashboard** icon where you can do this. Save your settings.




You can add as many different **Dashboards** as you want here by clicking .

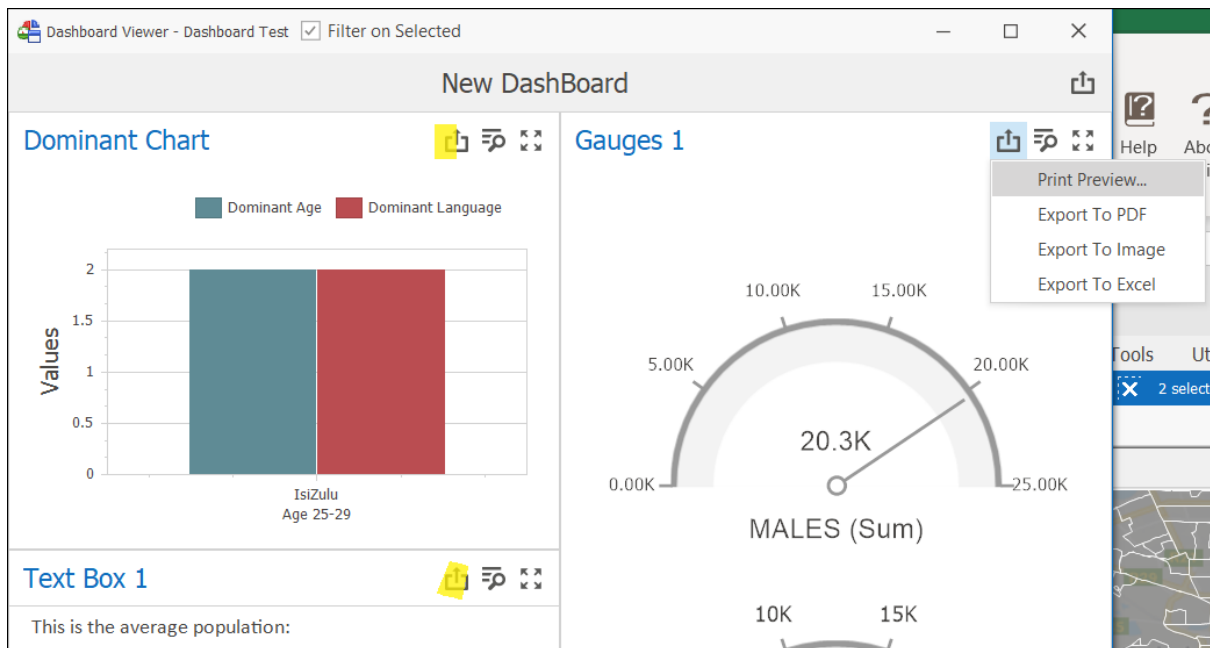
To delete a **Dashboard**, first select it then click .

You can inspect the data of the various charts etc. set up on your **Dashboard** by selecting the **Inspect Data** icon.



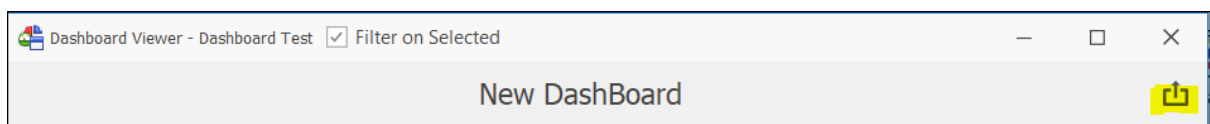
Click on the **Maximize** button  to expand any chart etc. to the full area of the window.

You can **Export** each chart etc. to **Image**, **Excel**, or **PDF**. You can even get a **Print Preview**. You do this by clicking the **Export To** icon above each chart etc. and then selecting the appropriate option.



To **Export** or have a **Print Preview** of the entire **Dashboard**, select the **Export To** icon on the top of the **Dashboard**.

**Note:** First expand the entire **Dashboard** window so you can see all items otherwise it will be cut off when exporting.



## Publishing Dashboards to Spatial Reader Files

You need a specific description in your license file to publish **Dashboards** to Spatial Reader files. If you do not have this description in your Spatial Publisher license file, you will be able to publish everything else in the spatial product you are using except for **Dashboards**.

PTSS-SpatialIXL-Plus,Bi,Briefcasesb,ODA,Storyboard-wayne-20201231

## Further Documentation on Dashboards

Further data on dashboards and their features can be found in the [DevExpress documentation](#).

### Support

---

T: +27871354351



[support@primethought.biz](mailto:support@primethought.biz) - [primethought.biz](http://primethought.biz)

Kyalami Estate, Midrand, Johannesburg,  
1684, South Africa

