



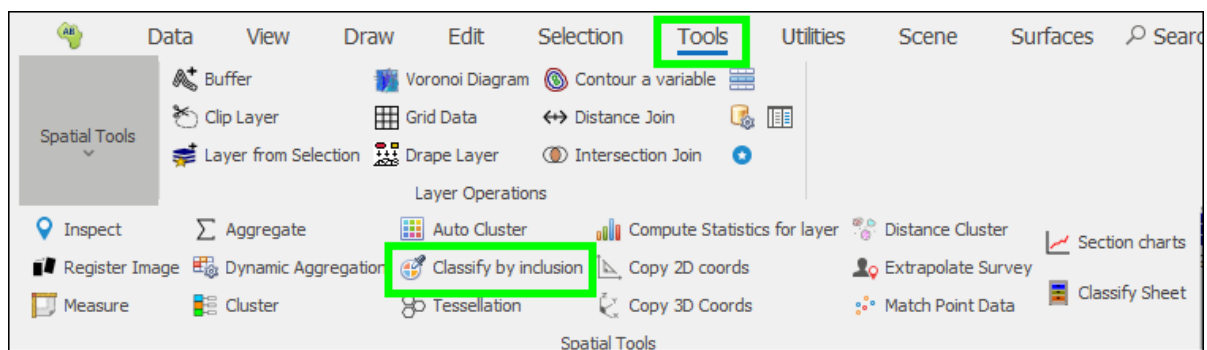
Classify Tool

Contents

Classify Tool	1
Classify by Inclusion	2
Classify Sheet	10

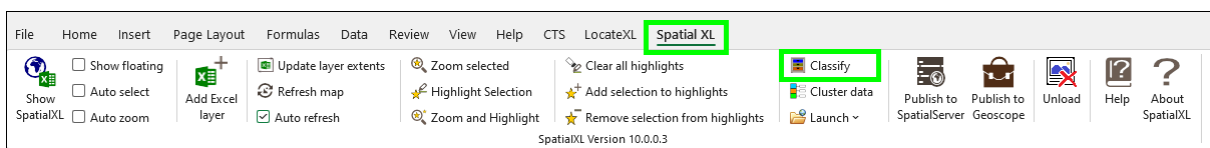
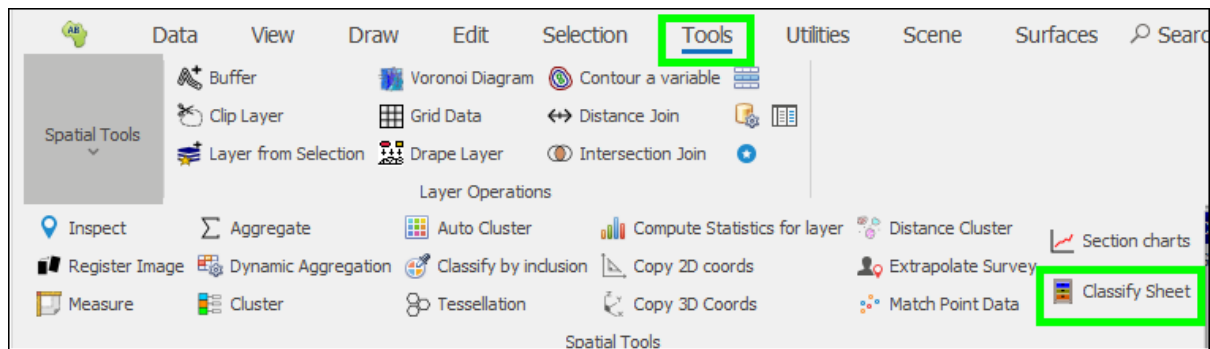
The **Classify** tool allows you to do a spatial join and assign columns from an area layer to a layer with geographic coordinates such as points. These columns are assigned based on the point layer's intersection with the area layer in space.

The tool has two forms in our spatial products. The first is the **Classify by Inclusion** tool which will do the operation for you within a layer in the product itself. The second is the **Classify Sheet** tool which does the operation to an Excel sheet, this tool is only available in SpatialXL:

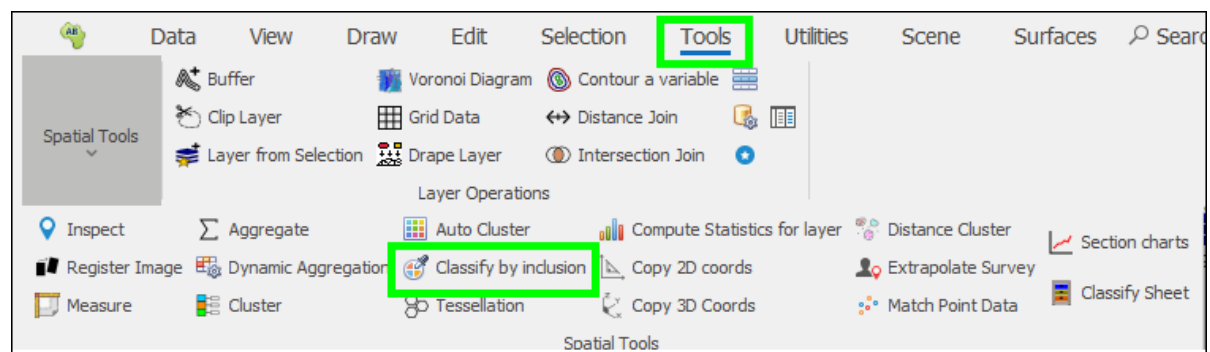


The **Classify Sheet** tool can be accessed in the Tools tab in SpatialXL or the SpatialXL Ribbon in Excel:

Classify Tool User Guide



Classify by Inclusion



Clicking on the tool brings up the following dialogue:

Classify Tool User Guide

Classify by inclusion

Layer to Classify: Outlets

☐ Classify selected only

Using Layer Using ShapeFile

Layer: Outlets

☐ Use selected features only

Drag a column header here to group by that column

	Column	New Column	Use
▼	ABC	ABC	<input checked="" type="checkbox"/>
▶	ActualGeometry	ActualGeometry	<input type="checkbox"/>
	Row	Row	<input type="checkbox"/>
	CODE	CODE	<input type="checkbox"/>
	CUSTOMER NAME	CUSTOMER NAME	<input type="checkbox"/>
	LONGITUDE	LONGITUDE	<input type="checkbox"/>

Classify

First, choose the layer you want to classify, this will be the point layer; in this example I have an **Outlets** layer which I want to classify:

Classify by inclusion

Layer to Classify: Outlets

☐ Classify selected only

Using Layer Using ShapeFile

Layer: Outlets

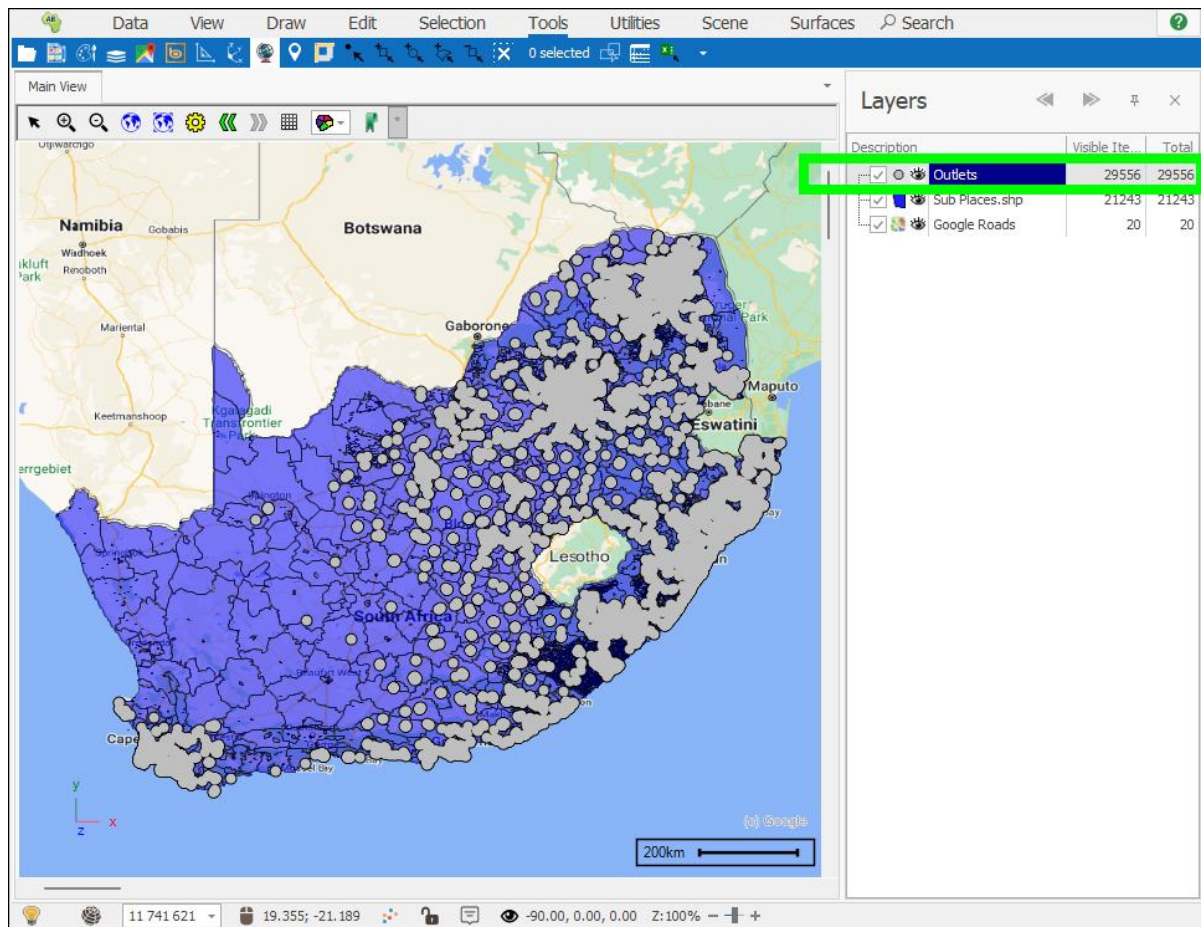
☐ Use selected features only

Drag a column header here to group by that column

	Column	New Column	Use
▼	ABC	ABC	<input checked="" type="checkbox"/>
▶	ActualGeometry	ActualGeometry	<input type="checkbox"/>
	Row	Row	<input type="checkbox"/>
	CODE	CODE	<input type="checkbox"/>
	CUSTOMER NAME	CUSTOMER NAME	<input type="checkbox"/>
	LONGITUDE	LONGITUDE	<input type="checkbox"/>

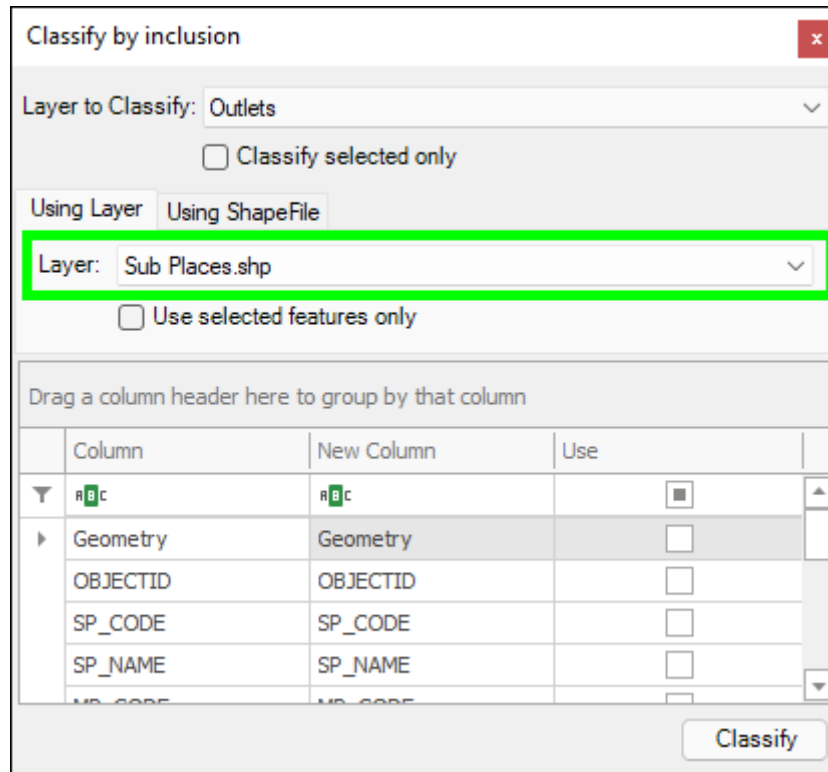
Classify

Classify Tool User Guide



Then in the **Using Layer** tab below choose the layer you will use to classify and assign columns; this will be the area layer; in this example I have a **Sub Places** layer which I'm using to classify:

Classify Tool User Guide



Classify by inclusion

Layer to Classify: Outlets

☐ Classify selected only

Using Layer Using ShapeFile

Layer: Sub Places.shp

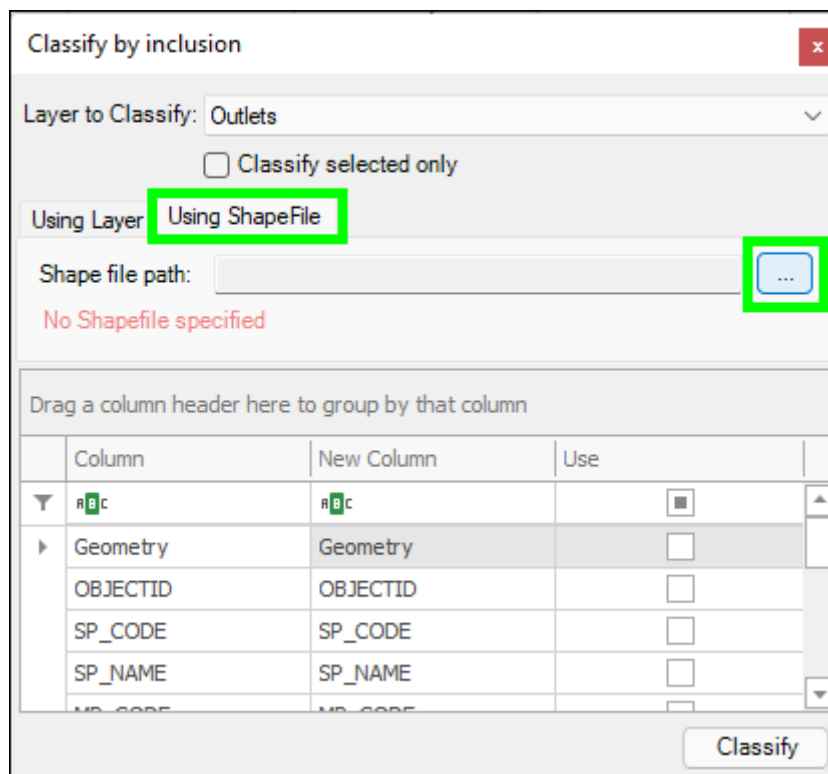
☐ Use selected features only

Drag a column header here to group by that column

	Column	New Column	Use
▼	RFC	RFC	<input checked="" type="checkbox"/>
▶	Geometry	Geometry	<input type="checkbox"/>
	OBJECTID	OBJECTID	<input type="checkbox"/>
	SP_CODE	SP_CODE	<input type="checkbox"/>
	SP_NAME	SP_NAME	<input type="checkbox"/>
	MS_CODE	MS_CODE	<input type="checkbox"/>

Classify

You can also browse to a shapefile, that you have not brought in as a layer, to use for the classification in the **Using Shapefile** tab:



Classify by inclusion

Layer to Classify: Outlets

☐ Classify selected only

Using Layer Using ShapeFile

Shape file path: ...

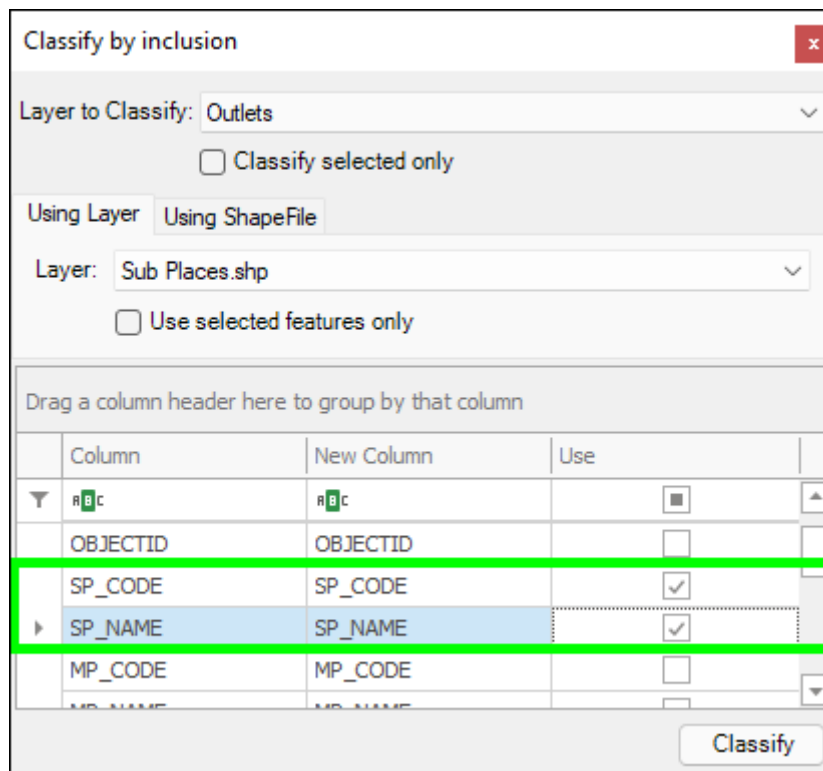
No Shapefile specified

Drag a column header here to group by that column

	Column	New Column	Use
▼	RFC	RFC	<input checked="" type="checkbox"/>
▶	Geometry	Geometry	<input type="checkbox"/>
	OBJECTID	OBJECTID	<input type="checkbox"/>
	SP_CODE	SP_CODE	<input type="checkbox"/>
	SP_NAME	SP_NAME	<input type="checkbox"/>
	MS_CODE	MS_CODE	<input type="checkbox"/>

Classify

Then in the grid below, choose the columns from the area layer that you want assigned to the target point layer by ticking them on under **Use**. Under **New Column** is the name the column will have when it is added to the target layer, you can change this if you want. In this example, the columns I want assigned are the **SP CODE** and **SP NAME**, which will give the Sub Place code and name of the Sub Place my outlets fall in:



Classify by inclusion

Layer to Classify: Outlets

☐ Classify selected only

Using Layer Using ShapeFile

Layer: Sub Places.shp

☐ Use selected features only

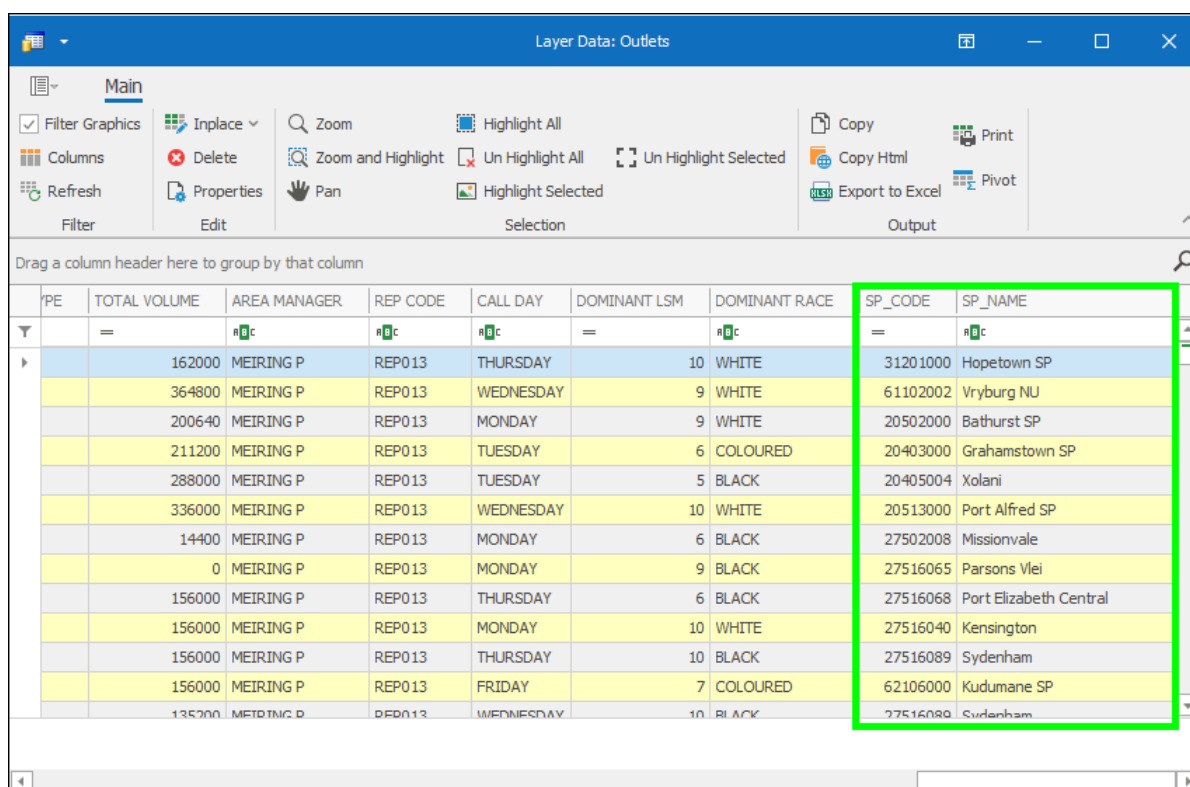
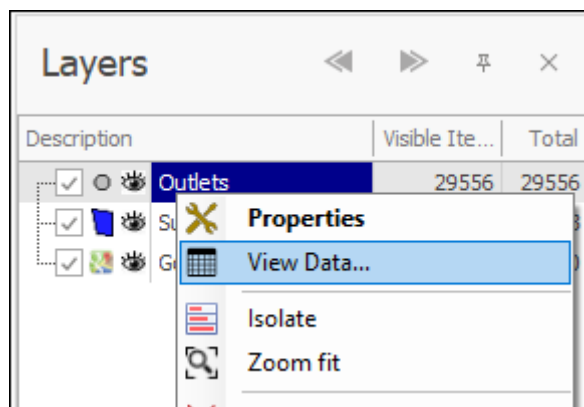
Drag a column header here to group by that column

	Column	New Column	Use
▼	ABC	ABC	<input type="checkbox"/>
	OBJECTID	OBJECTID	<input type="checkbox"/>
	SP_CODE	SP_CODE	<input checked="" type="checkbox"/>
▶	SP_NAME	SP_NAME	<input checked="" type="checkbox"/>
	MP_CODE	MP_CODE	<input type="checkbox"/>
	MP_NAME	MP_NAME	<input type="checkbox"/>

Classify

When done click **Classify**. Your target layer has now been classified, to see the result right click and **View Data** to open the Layer Data Grid, you will then see the columns assigned to the points:

Classify Tool User Guide



PE	TOTAL VOLUME	AREA MANAGER	REP CODE	CALL DAY	DOMINANT LSM	DOMINANT RACE	SP_CODE	SP_NAME
	162000	MEIRING P	REP013	THURSDAY	10	WHITE	31201000	Hopetown SP
	364800	MEIRING P	REP013	WEDNESDAY	9	WHITE	61102002	Vryburg NU
	200640	MEIRING P	REP013	MONDAY	9	WHITE	20502000	Bathurst SP
	211200	MEIRING P	REP013	TUESDAY	6	COLOURED	20403000	Grahamstown SP
	288000	MEIRING P	REP013	TUESDAY	5	BLACK	20405004	Xolani
	336000	MEIRING P	REP013	WEDNESDAY	10	WHITE	20513000	Port Alfred SP
	14400	MEIRING P	REP013	MONDAY	6	BLACK	27502008	Missionvale
	0	MEIRING P	REP013	MONDAY	9	BLACK	27516065	Parsons Vlei
	156000	MEIRING P	REP013	THURSDAY	6	BLACK	27516068	Port Elizabeth Central
	156000	MEIRING P	REP013	MONDAY	10	WHITE	27516040	Kensington
	156000	MEIRING P	REP013	THURSDAY	10	BLACK	27516089	Sydenham
	156000	MEIRING P	REP013	FRIDAY	7	COLOURED	62106000	Kudumane SP
	135200	MEIRING P	REP013	WEDNESDAY	10	BLACK	27516089	Sydenham

If you only want to classify selected elements in your target layer, then you would tick on **Classify Selected Only** and then select the elements in the scene with one of the selection tools before running the operation:

Classify Tool User Guide

Classify by inclusion ✕

Layer to Classify: Outlets ▼

☒ Classify selected only

Using Layer Using ShapeFile

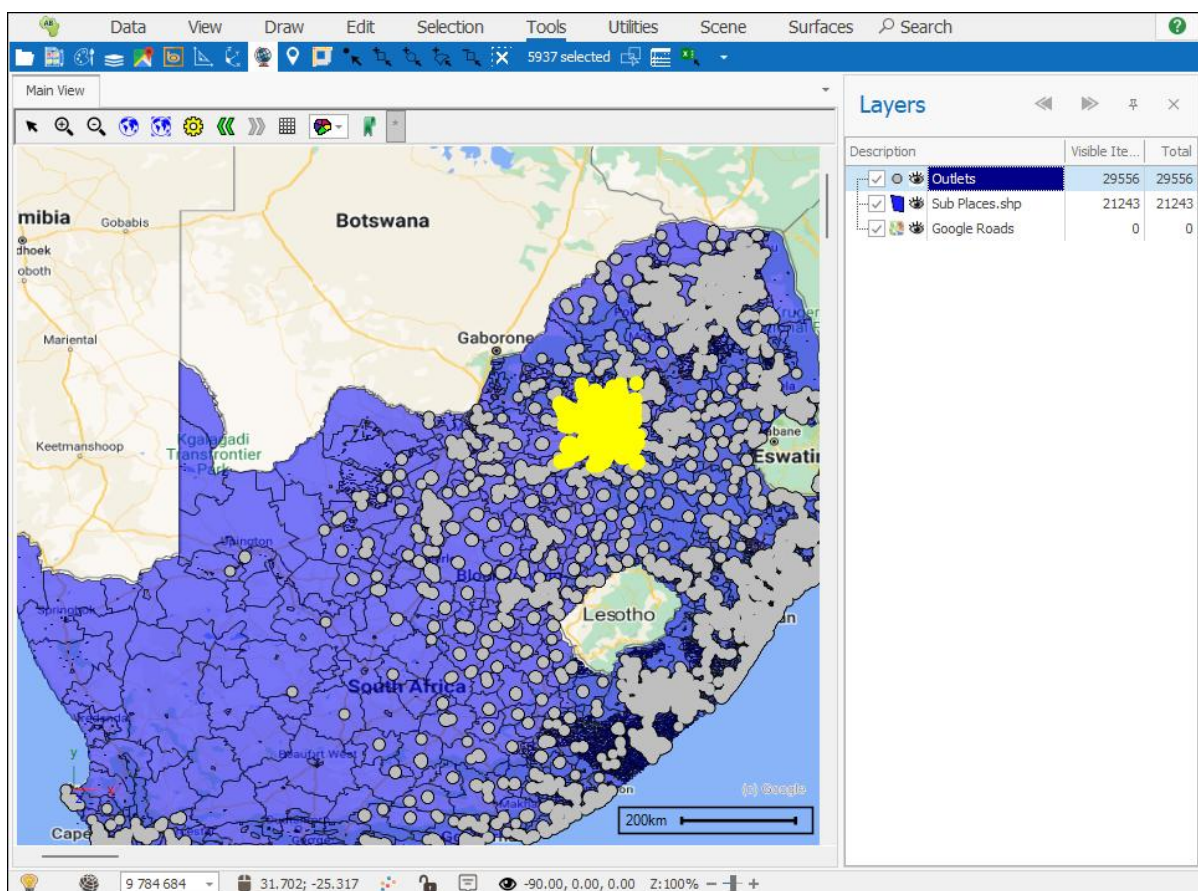
Layer: Sub Places.shp ▼

☐ Use selected features only

Drag a column header here to group by that column

	Column	New Column	Use
▼	REC	REC	<input type="checkbox"/>
▶	Geometry	Geometry	<input type="checkbox"/>
	OBJECTID	OBJECTID	<input type="checkbox"/>
	SP_CODE	SP_CODE	<input type="checkbox"/>
	SP_NAME	SP_NAME	<input type="checkbox"/>
	MP_CODE	MP_CODE	<input type="checkbox"/>

Classify



Similarly, if you only want to use selected elements in the area layer to classify with, then you will tick on **Use selected features only** and then select these in the scene with one of the selection tools before running the operation:

Classify by inclusion

Layer to Classify: Outlets

☐ Classify selected only

Using Layer Using ShapeFile

Layer: Sub Places.shp

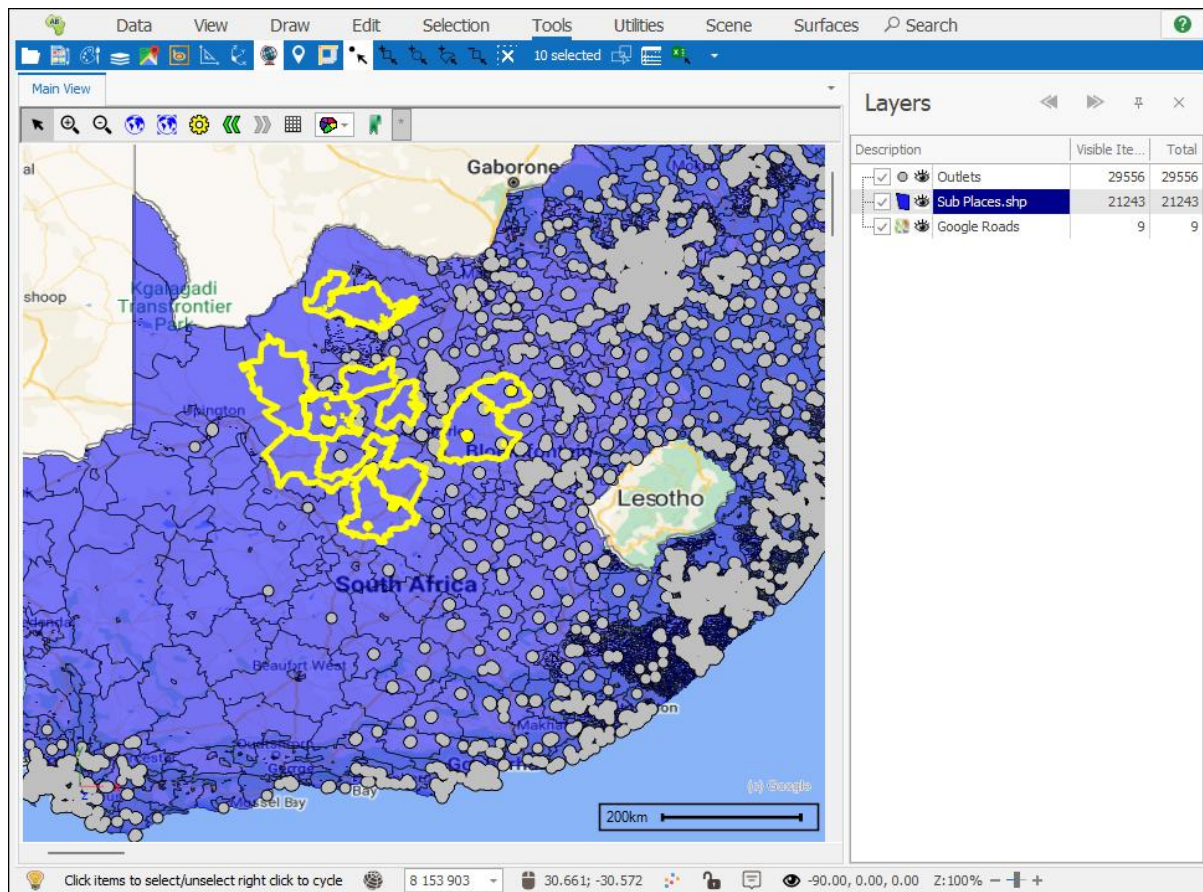
☒ Use selected features only

Drag a column header here to group by that column

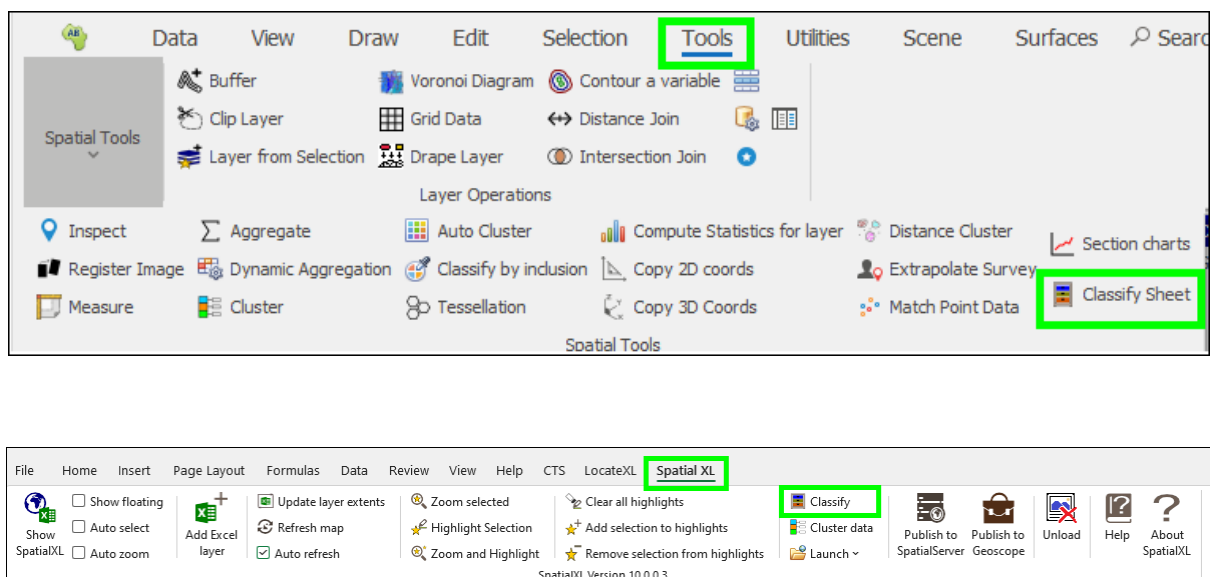
	Column	New Column	Use
▼	ABC	ABC	<input checked="" type="checkbox"/>
▶	Geometry	Geometry	<input type="checkbox"/>
	OBJECTID	OBJECTID	<input type="checkbox"/>
	SP_CODE	SP_CODE	<input type="checkbox"/>
	SP_NAME	SP_NAME	<input type="checkbox"/>
	MP_CODE	MP_CODE	<input type="checkbox"/>

Classify

Classify Tool User Guide



Classify Sheet



Before opening the tool, select the column or columns in your points sheet, that you have added as a layer in SpatialXL, where you want the assigned columns

Classify Tool User Guide

to populate. You can give these columns a name first. I will call the column **Province** since the province name that my Retail Outlets fall in is what I want assigned in this example:

	V	W	X	Y	Z	AA	AB	AC
1	MP CODE	MP NAME	MAIN PLACE TYPE	DOMINANT LSM	DOMINANT RACE	Province		
2	27516	Port Elizabeth	City	10	WHITE			
3	20502	Bathurst	Town	9	WHITE			
4	20502	Bathurst	Town	9	WHITE			
5	20403	Grahamstown	Town	6	COLOURED			
6	20405	Rhini	Township	5	BLACK			
7	20513	Port Alfred	Town	10	WHITE			
8	27502	Bethelsdorp	Town	6	BLACK			
9	27516	Port Elizabeth	City	9	BLACK			
10	27516	Port Elizabeth	City	6	BLACK			
11	27516	Port Elizabeth	City	10	WHITE			
12	27516	Port Elizabeth	City	10	BLACK			
13	27516	Port Elizabeth	City	7	COLOURED			
14	27516	Port Elizabeth	City	10	BLACK			
15	27516	Port Elizabeth	City	10	WHITE			
16	27516	Port Elizabeth	City	6	BLACK			
17	27502	Bethelsdorp	Town	6	COLOURED			
18	27516	Port Elizabeth	City	5	COLOURED			
19	27516	Port Elizabeth	City	6	COLOURED			
20	27516	Port Elizabeth	City	7	ASIAN			
21	27516	Port Elizabeth	City	6	COLOURED			
22	27516	Port Elizabeth	City	5	COLOURED			
23	27516	Port Elizabeth	City	6	COLOURED			
24	27502	Bethelsdorp	Town	7	COLOURED			
25	27516	Port Elizabeth	City	7	ASIAN			
26	27516	Port Elizabeth	City	7	ASIAN			
27	27507	Gqebera	Township	6	BLACK			
28	27502	Bethelsdorp	Town	6	COLOURED			
29	27516	Port Elizabeth	City	10	WHITE			
30	27516	Port Elizabeth	City	9	WHITE			
31	27516	Port Elizabeth	City	6	COLOURED			
32	27502	Bethelsdorp	Town	5	COLOURED			
33	27516	Port Elizabeth	City	6	COLOURED			
34	27515	Nelson Mandela	MBD Name	3	BLACK			
35	27516	Port Elizabeth	City	6	BLACK			
36	27502	Bethelsdorp	Town	6	BLACK			
37	27516	Port Elizabeth	City	6	COLOURED			

Open the tool. The worksheet you are currently on is populated by **Worksheet**. In the **Using Layers** tab below choose the area layer/s that you will be using to do the classify, in this case it is my **Provinces** layer:

Classify Tool User Guide

Classify by inclusion

Worksheet: Retail_Outlets

Using Layers Using ShapeFiles

Layers: ☐ Use selected features only

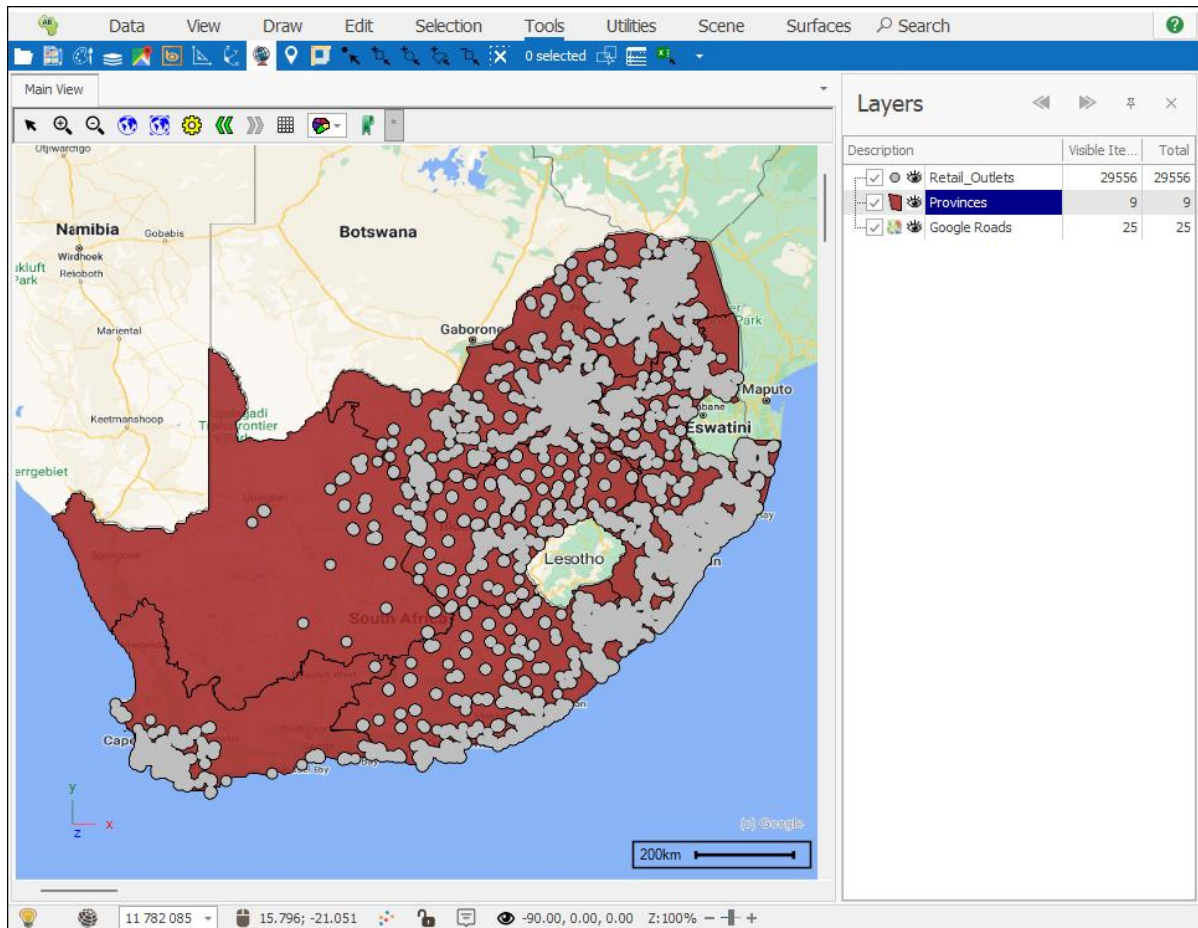
☐ Retail_Outlets
☒ Provinces
☐ Google Roads

Choose columns from classification source

	Sheet Column	Classify Column
▶	AA	

Classify

Classify Tool User Guide



You can also browse to a shapefile/s, that you have not brought in as a layer, to use for the classification instead, in the **Using Shapefiles** tab:

Classify by inclusion

Worksheet: Retail_Outlets

Using Layers

Using ShapeFiles

Add

Remove

No shapefiles loaded.

Select layers or shapefiles to classify with

Sheet Column	Classify Column
▶ AA	[EditValue is null]

Classify

In the grid below, the reference of the sheet column/s you have highlighted is populated, next to this, choose the column/s in the area layer you want assigned in the classify operation, I will choose the PROVINCE column, which has the province name:

Classify by inclusion

Worksheet: Retail_Outlets

Using Layers Using ShapeFiles

Layers: ☐ Use selected features only

- ☐ Retail_Outlets
- ☒ Provinces
- ☐ Google Roads

Choose columns from classification source

Sheet Column	Classify Column
AA	PROVINCE

Classify

When you are done click **Classify**. Your columns have now been assigned in your sheet:

Classify Tool User Guide

Classify by inclusion ✕


Worksheet:

Using Layers ☒ Using ShapeFiles

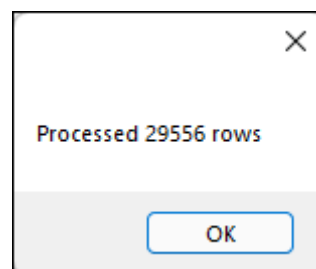
Layers: ☐ Use selected features only

- ☐ Retail_Outlets
- ☒ Provinces
- ☐ Google Roads

Choose columns from classification source

	Sheet Column	Classify Column
	AA	PROVINCE

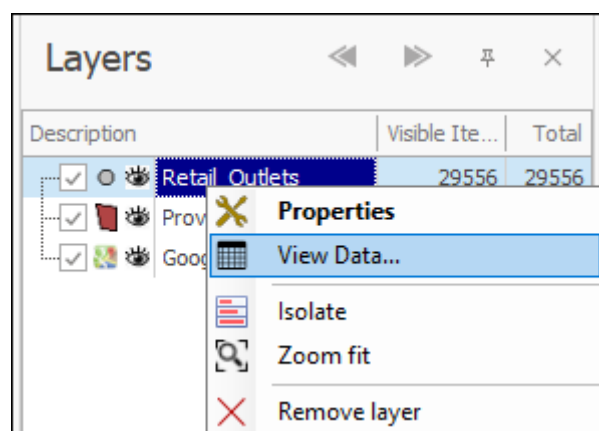
Classify



Classify Tool User Guide

	V	W	X	Y	Z	AA	AB
1	MP CODE	MP NAME	MAIN PLACE TYPE	DOMINANT LSM	DOMINANT RACE	Province	
2	27516	Port Elizabeth	City	10	WHITE	Northern Cape	
3	20502	Bathurst	Town	9	WHITE	North West	
4	20502	Bathurst	Town	9	WHITE	Eastern Cape	
5	20403	Grahamstown	Town	6	COLOURED	Eastern Cape	
6	20405	Rhini	Township	5	BLACK	Eastern Cape	
7	20513	Port Alfred	Town	10	WHITE	Eastern Cape	
8	27502	Bethelsdorp	Town	6	BLACK	Eastern Cape	
9	27516	Port Elizabeth	City	9	BLACK	Eastern Cape	
10	27516	Port Elizabeth	City	6	BLACK	Eastern Cape	
11	27516	Port Elizabeth	City	10	WHITE	Eastern Cape	
12	27516	Port Elizabeth	City	10	BLACK	Eastern Cape	
13	27516	Port Elizabeth	City	7	COLOURED	Northern Cape	
14	27516	Port Elizabeth	City	10	BLACK	Eastern Cape	
15	27516	Port Elizabeth	City	10	WHITE	Eastern Cape	
16	27516	Port Elizabeth	City	6	BLACK	Eastern Cape	
17	27502	Bethelsdorp	Town	6	COLOURED	Eastern Cape	
18	27516	Port Elizabeth	City	5	COLOURED	Northern Cape	
19	27516	Port Elizabeth	City	6	COLOURED	Eastern Cape	
20	27516	Port Elizabeth	City	7	ASIAN	Eastern Cape	
21	27516	Port Elizabeth	City	6	COLOURED	Eastern Cape	
22	27516	Port Elizabeth	City	5	COLOURED	Eastern Cape	
23	27516	Port Elizabeth	City	6	COLOURED	Eastern Cape	
24	27502	Bethelsdorp	Town	7	COLOURED	Eastern Cape	
25	27516	Port Elizabeth	City	7	ASIAN	Eastern Cape	
26	27516	Port Elizabeth	City	7	ASIAN	Eastern Cape	
27	27507	Gqebera	Township	6	BLACK	Eastern Cape	
28	27502	Bethelsdorp	Town	6	COLOURED	Eastern Cape	
29	27516	Port Elizabeth	City	10	WHITE	Eastern Cape	
30	27516	Port Elizabeth	City	9	WHITE	Eastern Cape	
31	27516	Port Elizabeth	City	6	COLOURED	Eastern Cape	
32	27502	Bethelsdorp	Town	5	COLOURED	Eastern Cape	
33	27516	Port Elizabeth	City	6	COLOURED	Eastern Cape	
34	27515	Nelson Mandela	MBD Name	3	BLACK	Eastern Cape	
35	27516	Port Elizabeth	City	6	BLACK	Eastern Cape	
36	27502	Bethelsdorp	Town	6	BLACK	Eastern Cape	
37	27516	Port Elizabeth	City	6	COLOURED	Eastern Cape	

The columns have also been assigned in the Layer Data Grid of my **Retail_Outlets** as well:



Classify Tool User Guide

If you only want to use selected elements in the area layer to do the classify with, then tick on **Use selected features only** and select the elements in the scene with one of the selection tools, before running the operation:

Classify Tool User Guide

Classify by inclusion

Worksheet: Retail_Outlets

Using LayersUsing ShapeFiles

Layers:

☒ Use selected features only

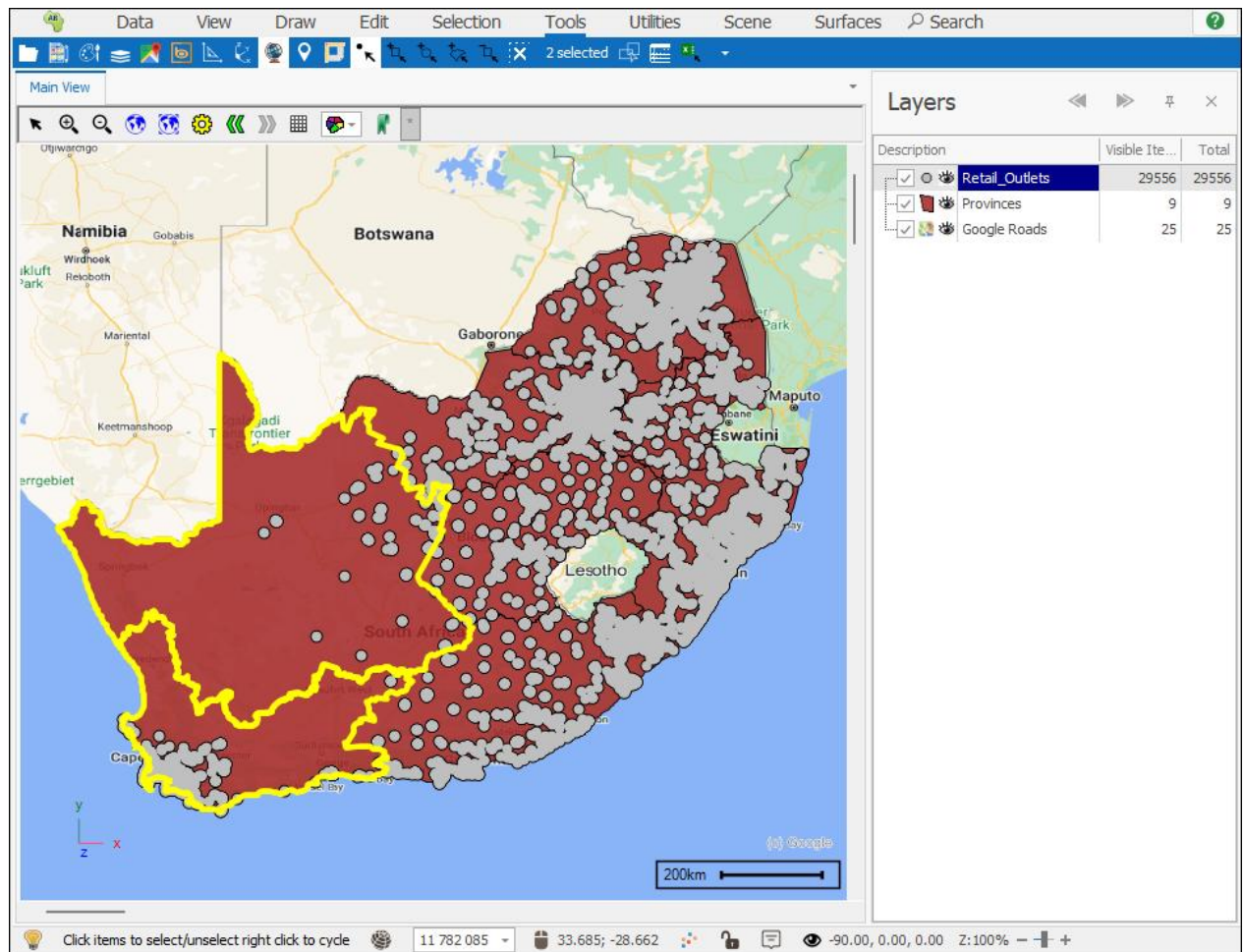
☐ Retail_Outlets
☒ Provinces
☐ Google Roads

Choose columns from classification source

Sheet Column	Classify Column
▶ AA	PROVINCE

Classify

Classify Tool User Guide



Support

T: +27871354351



support@primethought.biz - primethought.biz

Kyalami Estate, Midrand, Johannesburg,
1684, South Africa

