



# How to Download, Install & License RouteXL

## Contents

How to Download, Install & License RouteXL .....	1
Download .....	1
Before Installing.....	2
Install.....	2
License .....	7
Check and Update to the Latest Software Version .....	13

**Important Note: RouteXL is a plug-in for our spatial products such as SpatialXL so you must have downloaded, installed and licensed SpatialXL before continuing with the steps in this guide.**

## Download

1. Go to <https://primethought.biz/>
2. Click on “Product Downloads” in the navigation bar.

About Us ▾ Help ▾ Spatial BI ↗ Mine Services ↗ Newsroom **Product Downloads**

3. Under “Product”, click on “SpatialXL” to start downloading the latest version.

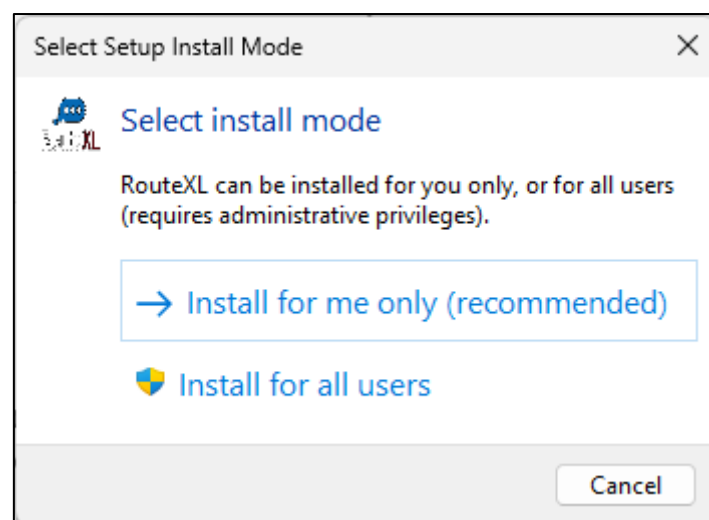
Product	Version	Release Notes
<a href="#">SpatialXL ↗</a>	11.2.0.4	<a href="#">11.2.0.4 Release Notes</a>
<a href="#">SpatialStudio ↗</a>	2.2.0.4	<a href="#">2.2.0.4 Release Notes</a>
<a href="#">RouteXL ↗</a>	7.0.3.4	<a href="#">7.0.3.4 Release Notes</a>

## Before Installing

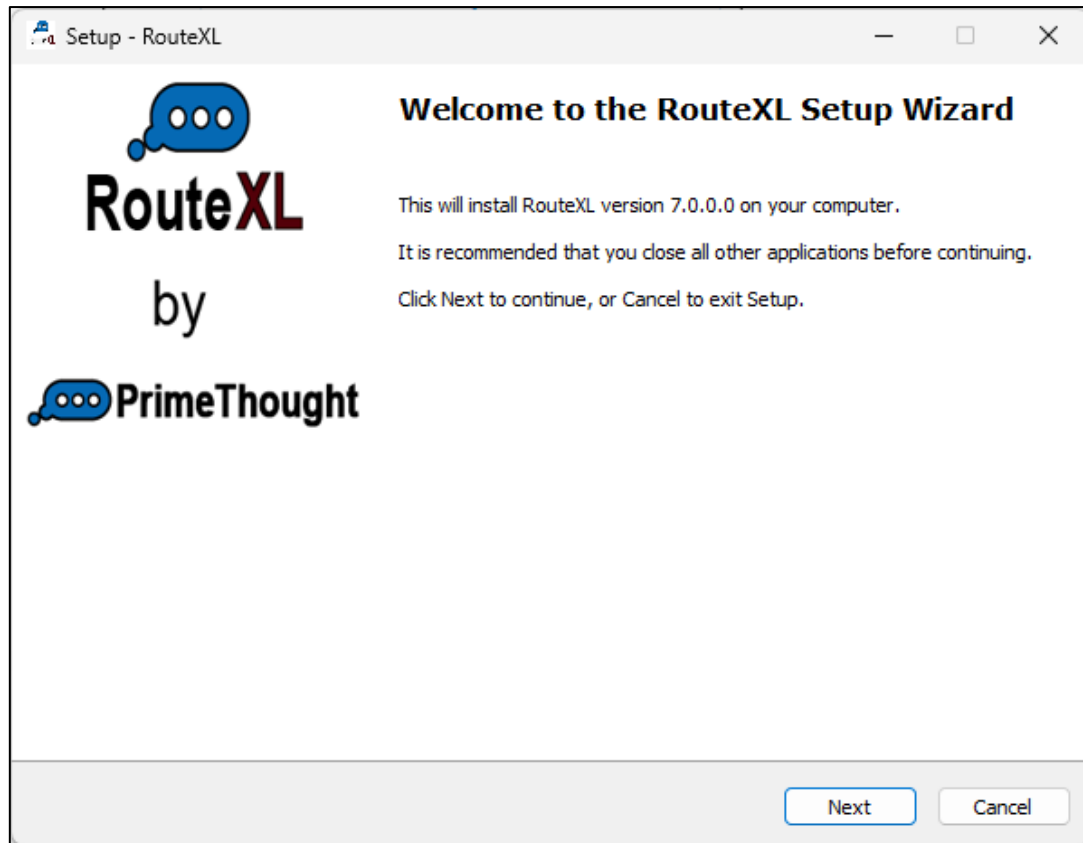
- Close Excel before you begin installation.
- Occasionally certain anti-virus software can interfere with installation. If your software does not install correctly, we recommend switching off the anti-virus and running the installation again.

## Install

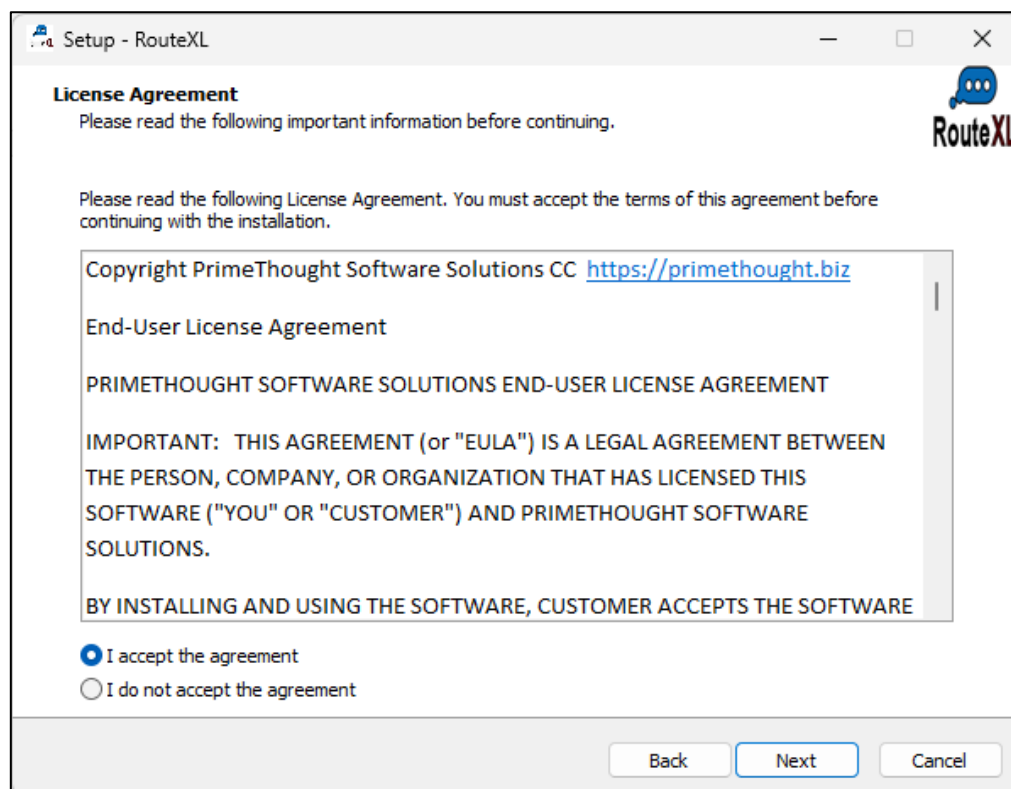
1. Once the RouteXL install file is downloaded, double click on it to run it.
2. Select 'Install for me only (recommended)'. If you want to install for all users, you will need admin rights.



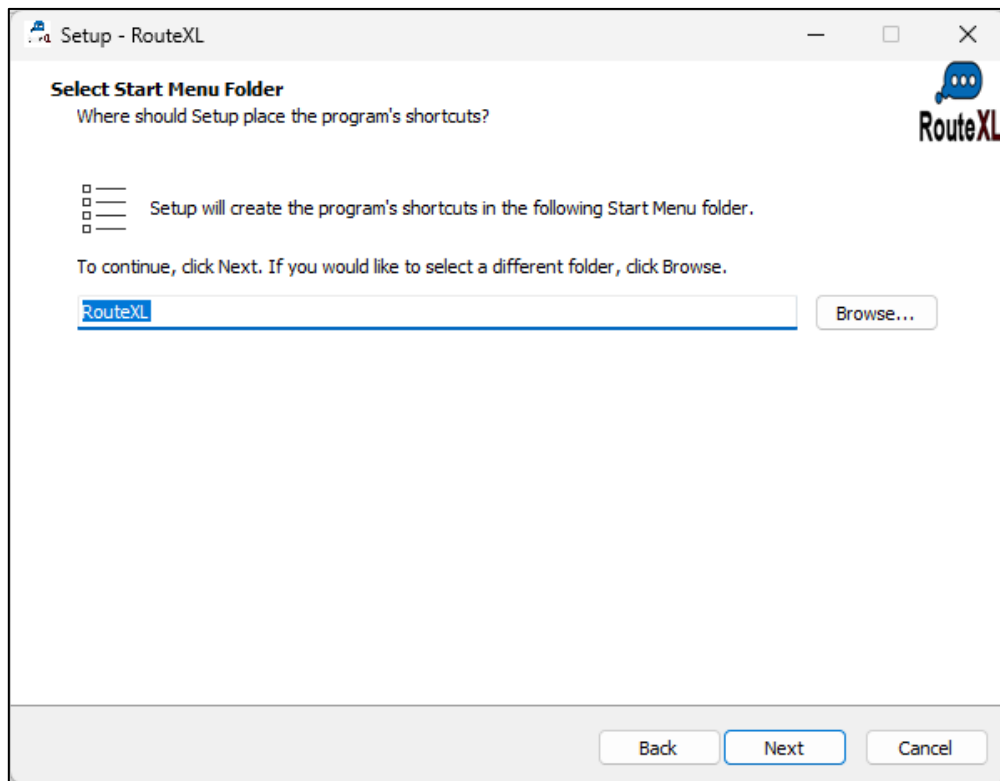
3. Click 'Next'.



4. Read and decide whether to accept the license agreement, then click 'Next':

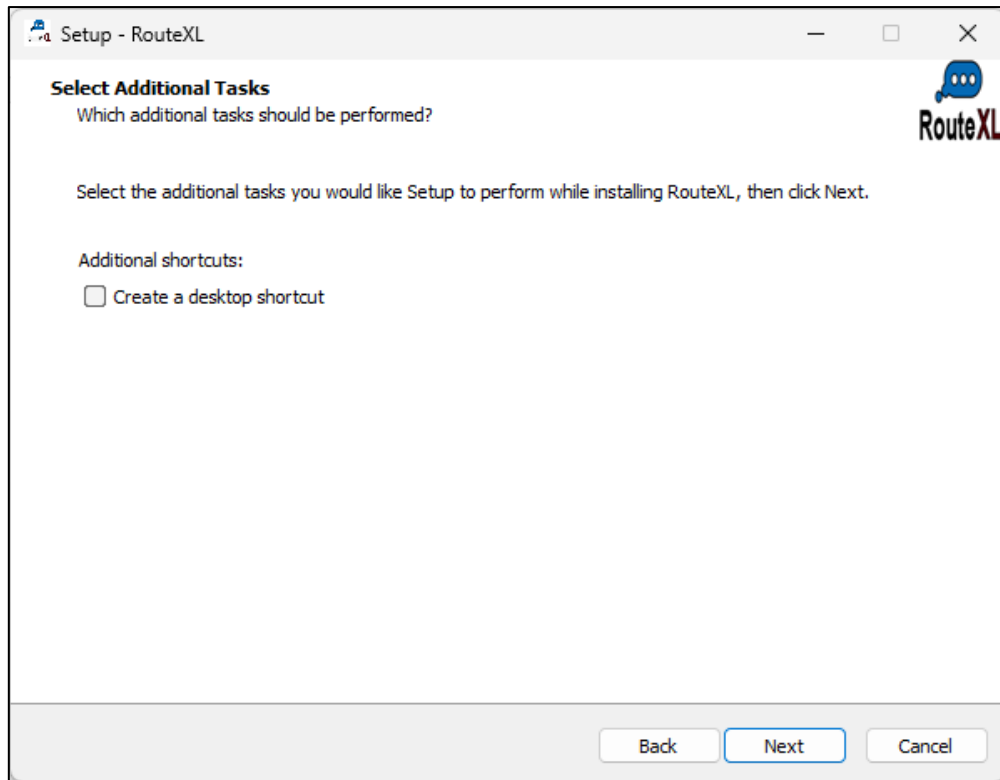


5. Optionally change the start menu folder that the program's shortcuts will be stored in, otherwise accept the default and click 'Next':

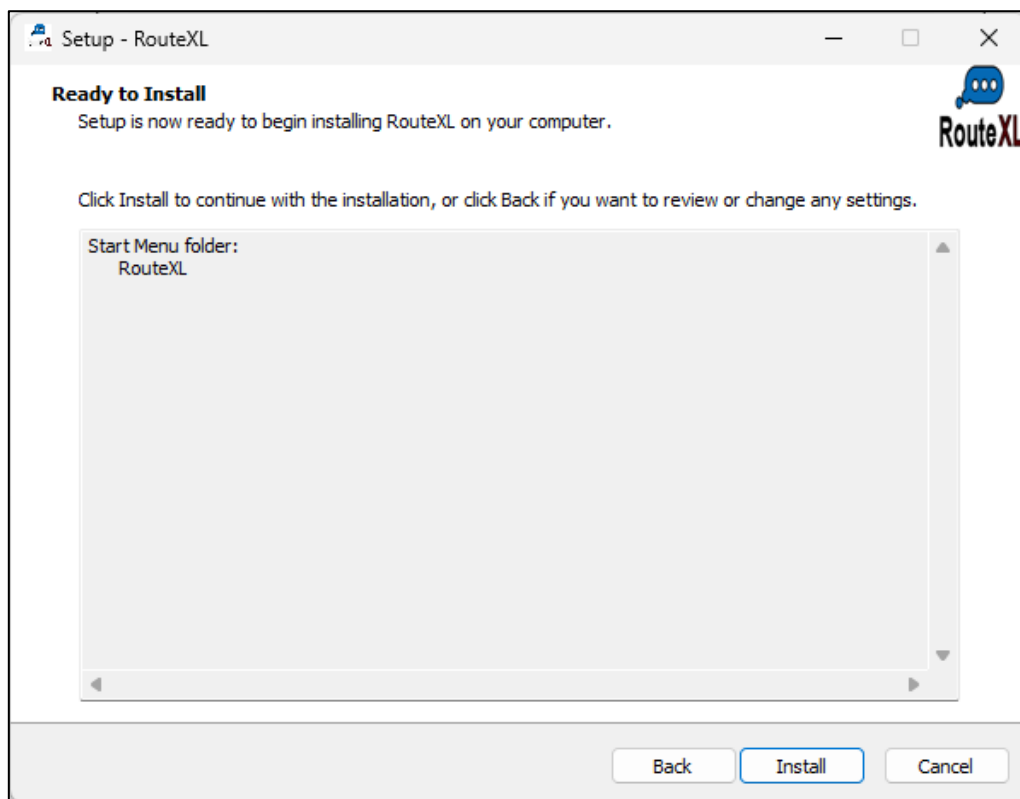


6. If you want a desktop shortcut to be created for the program, check this on, then click 'Next':

## How to Download, Install & License RouteXL

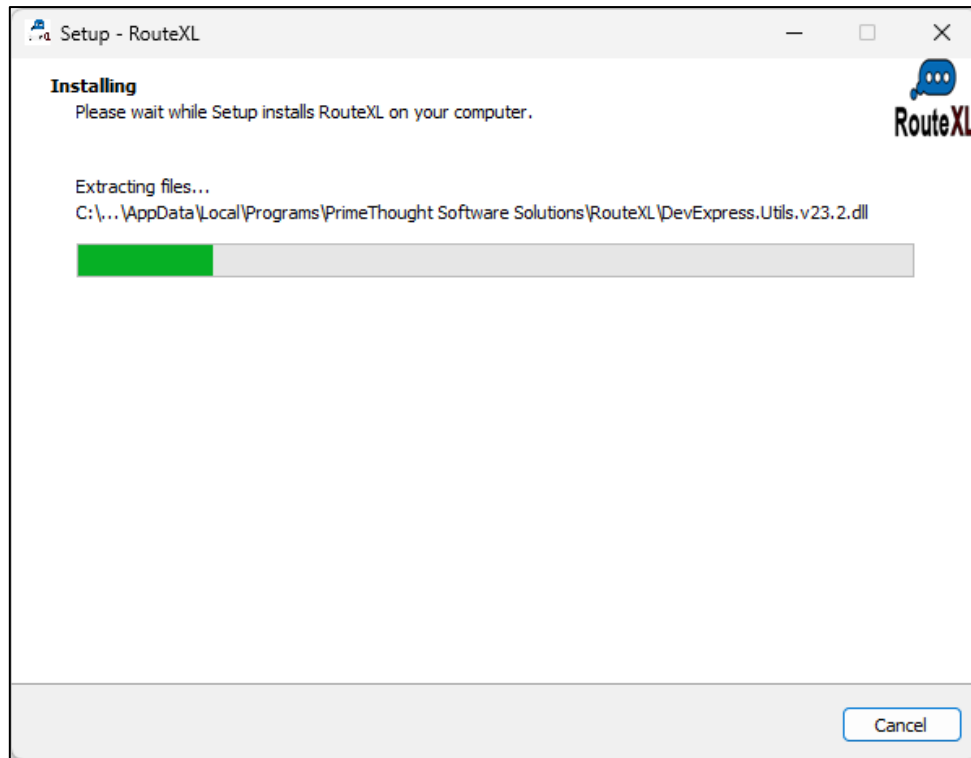


7. Click 'Install':

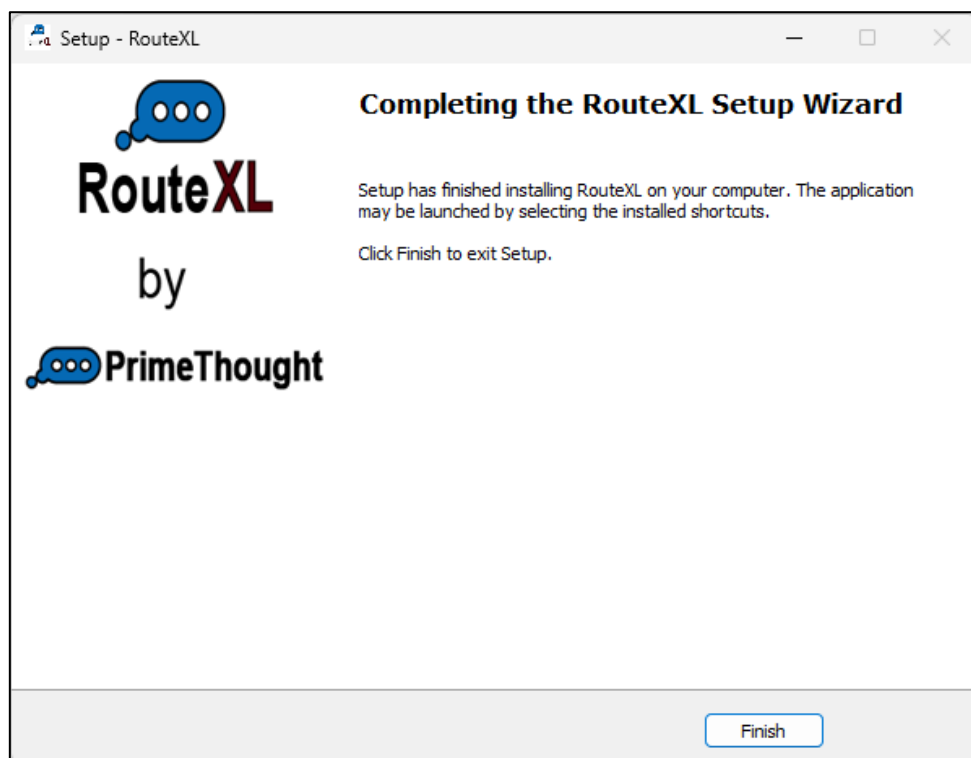


8. Installation will commence:

## How to Download, Install & License RouteXL

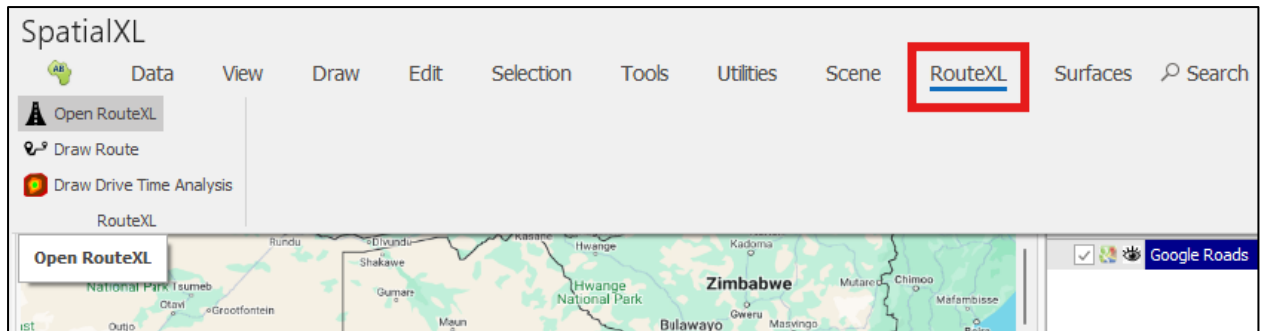


9. Click 'Finish':



10. Open up SpatialXL. You should now see a RouteXL tab there. If you do not please contact PrimeThought for assistance.

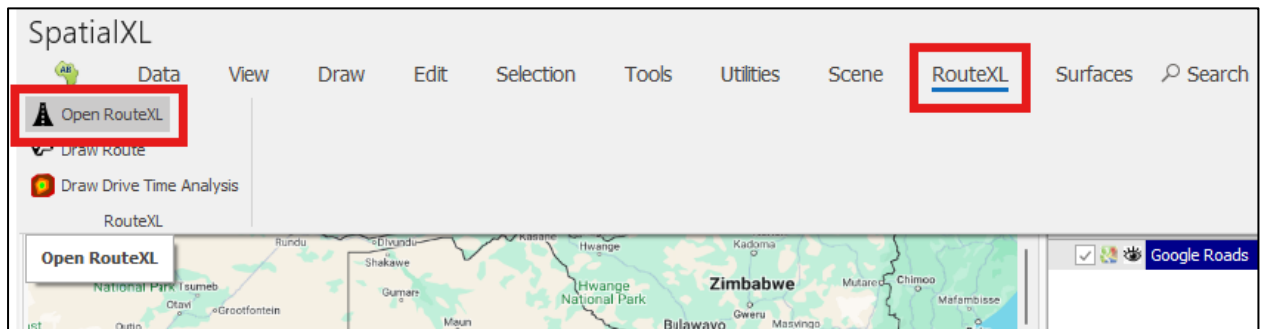
## How to Download, Install & License RouteXL



Congratulations, you have now installed RouteXL on your computer!

## License

1. Open up SpatialXL.
2. Click on 'Open RouteXL' in the RouteXL tab.



3. You will be prompted to license RouteXL. When the licensing dialogue comes up, click the 'Update License' button:



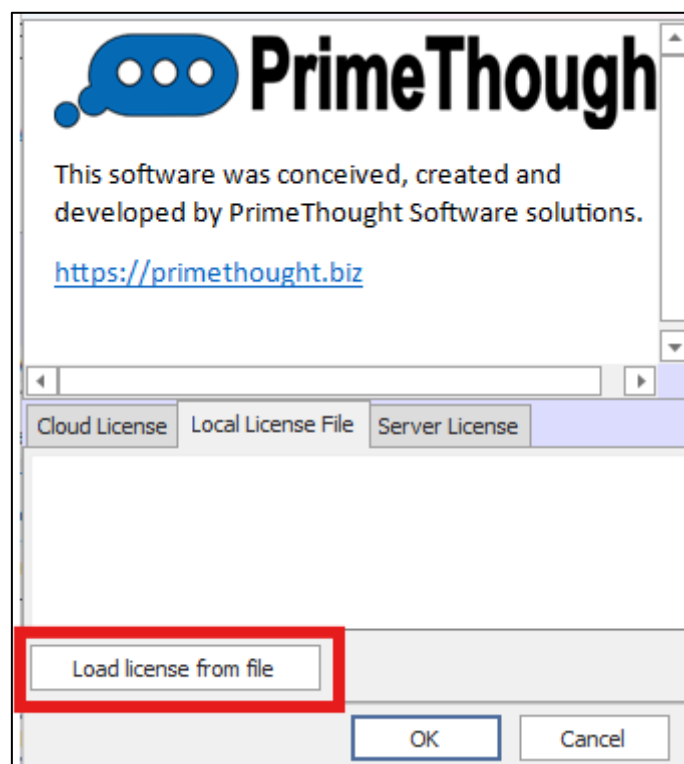
4. This will bring up the 'RouteXL Licensing information' dialogue.  
You have 3 different licensing options here.

- 'Cloud License'. If you have a cloud license, enter in your license credentials here, then optionally choose to have your password saved so you do not have to enter it each time you log in to RouteXL. Then click 'OK'.





- 'Local License File'. This is a local license file (with a .lic extension) that is sent to by PrimeThought. Click the 'Load license from file' button and browse to the license file.



Then click 'OK' when done.

- ‘Server License’. This is a license stored on a server that uses our concurrent network licensing service. Enter the license server URL here then click ‘OK’.



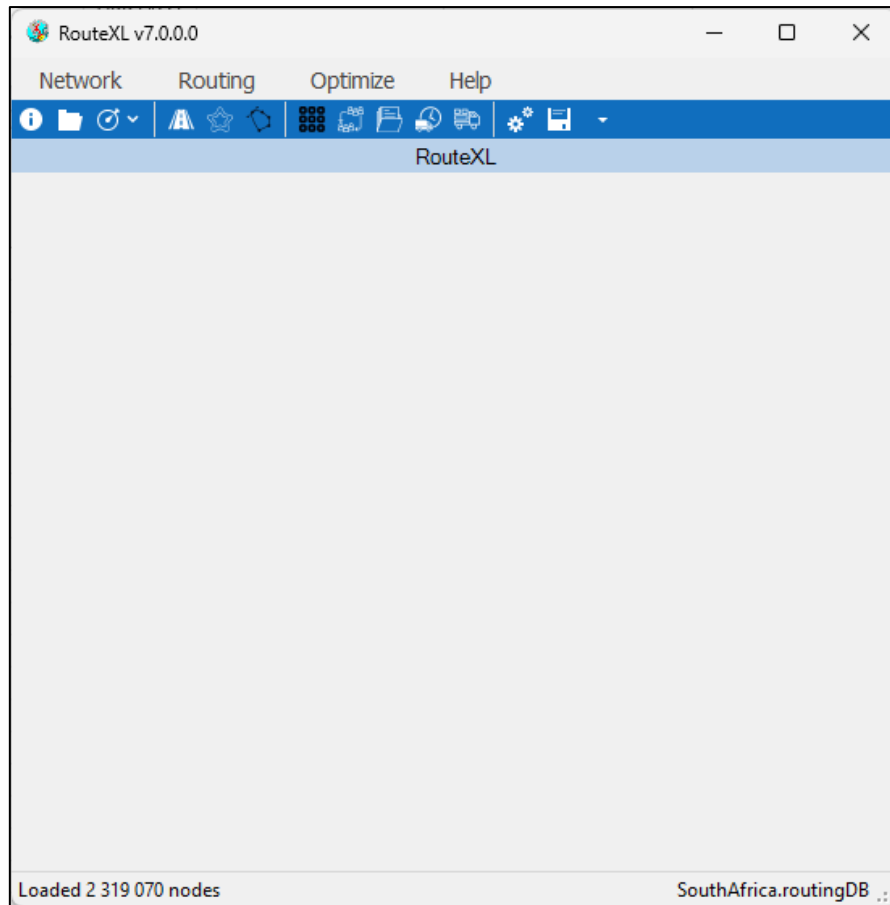
5. You are now licensed, and your license details will display by the License Status field at the bottom:

## How to Download, Install & License RouteXL



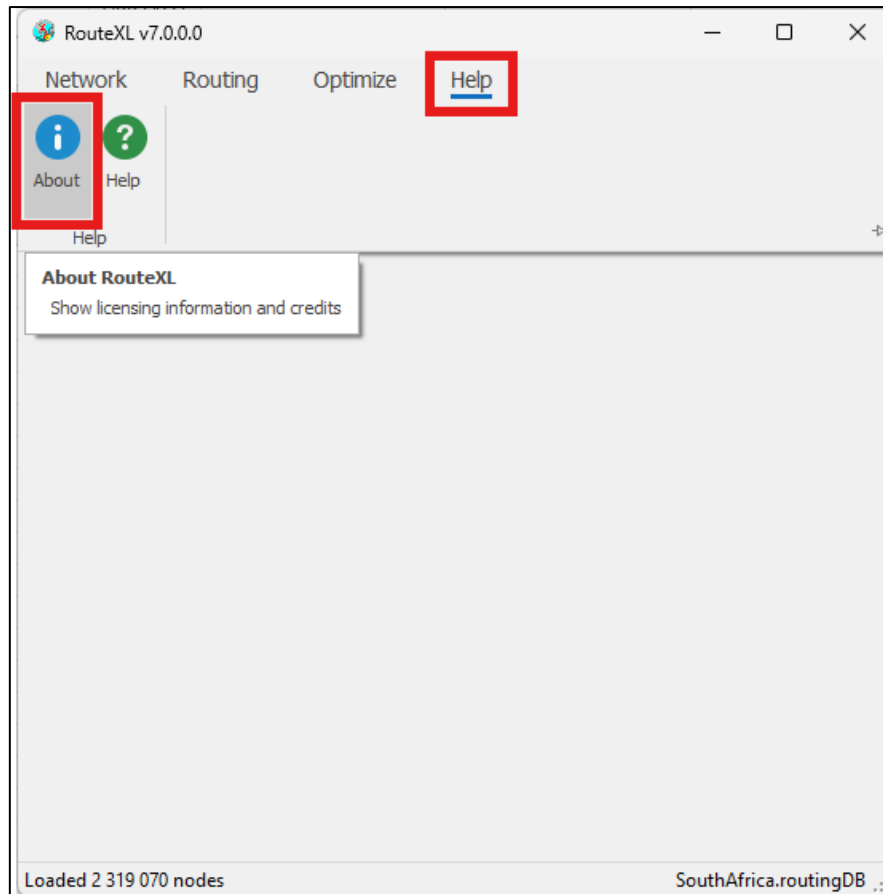
You can exit out of this dialogue now and the RouteXL window will load:

## How to Download, Install & License RouteXL



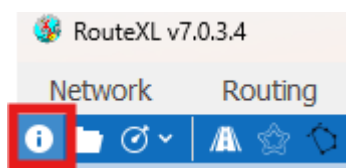
Note: You can always manage your license by going to the Help tab in RouteXL and then clicking on 'About':

## How to Download, Install & License RouteXL

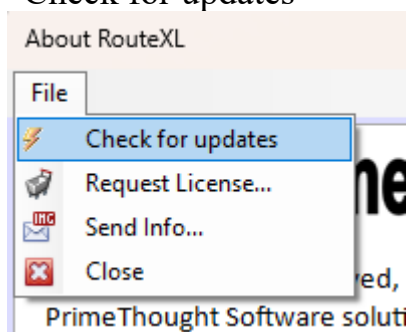


### Check and Update to the Latest Software Version

You can now update to the latest version right within RouteXL itself. Simply go to “About RouteXL”:



Then, in the About RouteXL dialogue, click the File pull-down menu and select “Check for updates”



## How to Download, Install & License RouteXL

It will then let you know whether a later version of RouteXL is available, and you will be able to download it from here:



You can now also request a license or send your machine info using the “Request License” and “Send Info...” buttons found in the File pull-down menu as well.

### Support

---



T: +27871354351

[support@primethought.biz](mailto:support@primethought.biz) - [primethought.biz](http://primethought.biz)

Kyalami Estate, Midrand, Johannesburg,  
1684, South Africa

