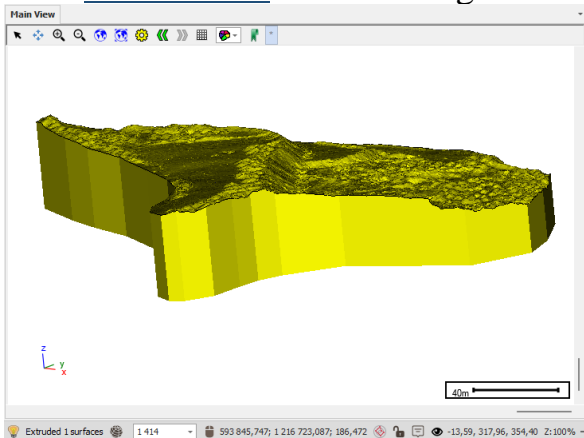


SpatialStudio 2.2.0.4 Release Notes

- ✓ Fixes on Print Template scene display.
- ✓ Fix on loading KML files.
- ✓ Fix on reading and writing GEOJSON files.
- ✓ Minor bugfixes.
- ✓ New [Extrude tool](#) for extruding surfaces!

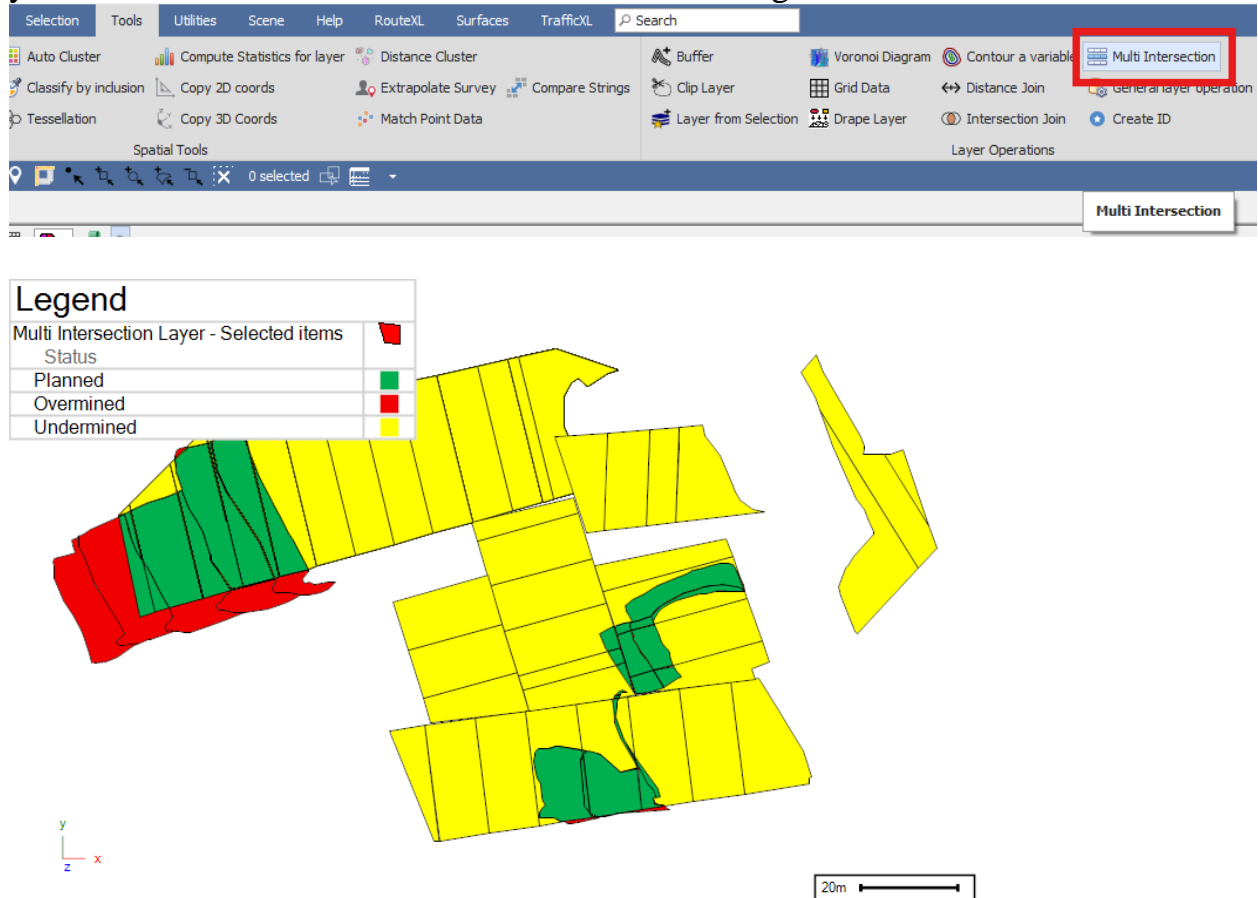


- ✓ New feature to drape images onto 3D surfaces! For example, an arial satellite image of a mine dump can be draped onto the actual mine dump surface:

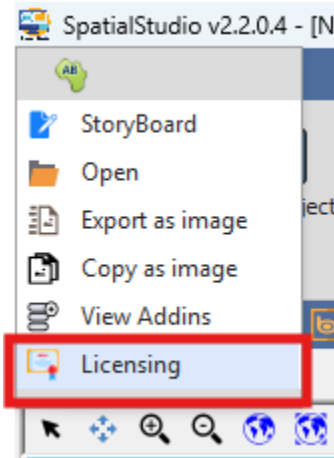


Check out this new feature in the “Draping Images onto Surfaces” section of the [Working with Images user guide](#)!

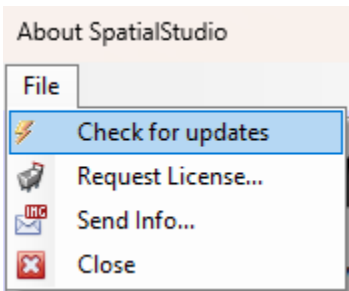
- ✓ New and improved Multi Intersection tool that allows you to do get the intersection of multiple layers such as a layer with planned mining blocks and actual mining done and see how much of the planned you mined, how much you overmined and how much was not mined enough.



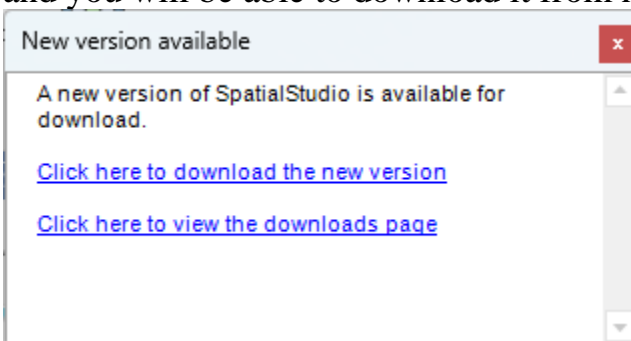
- ✓ You can now update to the latest version right within SpatialStudio itself. Simply go to “Licensing” in Application Menu (Africa logo):



Then, in the About SpatialStudio dialogue, click the File pull-down menu and select “Check for updates”



It will then let you know whether a later version of SpatialStudio is available and you will be able to download it from here:



You can now also request a license or send your machine info using the “Request License” and “Send Info...” buttons found in the File pull-down menu as well.

Support



T: +27871354351

support@primethought.biz - primethought.biz

Kyalami Estate, Midrand, Johannesburg,
1684, South Africa

